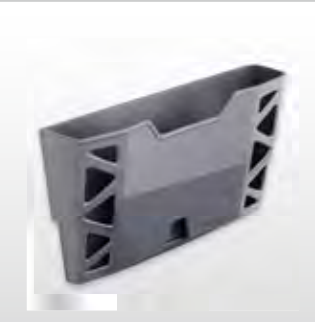




Sortimo[®]
Intelligent Mobility



ORIGINAL ACCESSORIES

Useful additions to Sortimo in-vehicle equipment

www.sortimo.co.uk



RICHARDSONS
MAKING WORKSPACE WORK

6 Collingwood Court
Riverside Park
Middlesbrough TS2 1RP



Tel: 01642 242228
Fax: 01642 242259

www.richardsonsuk.co.uk | sales@richardsonsuk.co.uk

ORIGINAL ACCESSORIES FROM SORTIMO

Newer, lighter, more efficient

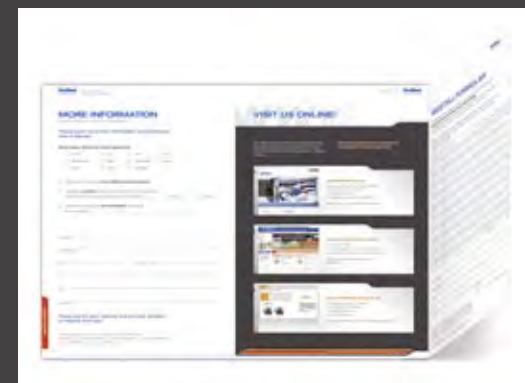
Globelyst M is the latest generation of van racking systems from Sortimo. Whether you need individual partitioning for drawers and trays,

storage trays, lashing straps or workbenches – you can customise Globelyst M to suit your particular requirements.

Simple to customize, simply Sortimo.

CONTENTS

- Accessories for Globelyst M** P. 4
- ProSafe** P. 6
- Lashing rails P. 8
- Restraint pole P. 9
- Lashing straps P. 10
- Load safety equipment for vehicle assembly floors P. 12
- Load safety accessories P. 13
- Load safety nets P. 14
- Original Sortimo accessories** P. 16
- Work benches P. 18
- Foldable tables and folding brackets P. 20
- Ramp rails P. 21
- Dividers for drawers P. 22
- Dividers for shelf trays and standard shelves P. 24
- Case fixing clamp & light weight long component trays P. 25
- Anti-rattle mat for drawers P. 26
- Anti-rattle mat for shelf trays and open shelves with border P. 27
- Perforated aluminium panel accessories P. 28
- Hooks and holders P. 30
- Canisters and complementary holders P. 35
- Cleaning accessories P. 36
- Warning accessories P. 38
- Fire extinguishers and First Aid BOXXes P. 39
- i-BOXXes for all emergencies P. 40
- Telescopic ladders P. 42
- Ventilation systems P. 44
- TopSystem P. 46
- Electrical accessories** P. 48
- Portable lamps P. 50
- Mounted lights P. 52
- AC Inverter P. 54
- Sockets P. 56
- Passenger Compartment** P. 58
- Automanager P. 60
- Autoassistant P. 62
- Office Bag P. 62
- Sortimo Direct** P. 64



ACCESSORIES FOR GLOBELYST M

Globelyst M meets all your requirements. Lightweight construction and CO2 efficiency as well as effective and ergonomic use were always our focal point during development.

With original accessories from Sortimo, you design Globelyst M completely according to your own requirements. Customised partitioning and divider sets for drawers or trays, storage pockets, lashing rails, work benches and much more, facilitate the best usage of your utility vehicle.



PROSAFE – HAS EVOLVED INTO AN ENTIRELY INTEGRATED LASHING SYSTEM

ProSafe in Uprights



ProSafe in the Traverse



ProSafe as Floor Rails



ProSafe is integrated as a standard in the load securing system from Sortimo.

The trouble free hooking in of lashing belts and load securing nets are enabled in uprights, frames, traverses and floor rails. ProSafe makes load securing possible in next to no time.

Your benefits:

- ✓ You and your freight are safe on the road.
- ✓ You conserve materials.
- ✓ Lashing rails are already integrated in the racking system.
- ✓ You save on time, weight and money.



ProSafe lashing point in the Floor



CargoStopp ProSafe

The CargoStopp allows for reliable load safety on the vehicle safety floor. It is inserted into the ProSafe floor lashing point with its hook.



www.sortimo.co.uk

LASHING RAILS

Lashing rails



The lashing rails can be fastened to the side cladding, partition or onto the van racking. Fastening material for installation onto the side cladding and van racking available on request.

VZS PS 40-3	Ref. no. 1000000245	Lashing rail ProSafe 40-3	Dim. (WxLxH): 927 x 47 x 27 mm	£ 33.51
VZS PS 50-3	Ref. no. 1000000246	Lashing rail ProSafe 50-3	Dim. (WxLxH): 1169 x 47 x 27 mm	£ 40.21
VZS PS 60-3	Ref. no. 1000000247	Lashing rail ProSafe 60-3	Dim. (WxLxH): 1410 x 47 x 27 mm	£ 46.42
VZS PS 120-3	Ref. no. 1000000248	Lashing rail ProSafe 120-3	Dim. (WxLxH): 3004 x 47 x 27 mm	£ 69.98
SSA VZS	Ref. no. 71013290	Screw set for fastening onto the side cladding		£ 2.59



Lashing for gas bottles



These lashing rails can be mounted to the front of the van racking system. Compatible with the ratchet strap for the lashing of gas bottles.

VZS PS 03-3	Ref. no. 1000000241	Lashing rails ProSafe depth 3	Dim. (WxLxH): 251 x 47 x 27 mm	£ 12.91
VZS PS 04-3	Ref. no. 1000000242	Lashing rails ProSafe depth 4	Dim. (WxLxH): 355 x 47 x 27 mm	£ 17.64
VZS PS 05-3	Ref. no. 1000000243	Lashing rails ProSafe depth 5	Dim. (WxLxH): 459 x 47 x 27 mm	£ 20.60
VZS PS 07-3	Ref. no. 1000000244	Lashing rails ProSafe depth 7	Dim. (WxLxH): 667 x 47 x 27 mm	£ 28.09



RESTRAINT POLES

The **universally deployable restraint poles** can be used not only horizontally but also vertically for the interlocking of loads, depending on the position of the

lashing rails. With its square cross section, it provides optimum hold. Additional lashing straps with lashing fittings can be mounted into the integrated track.

Restraint poles made of aluminium with gas pressure springs for locking and securing of loads.

ZSPALU 1860	Ref. no. 801012835	Dim.: (WxDxH): 1860 x 45 x 40 mm	Weight: 3,59 kg	£ 79.54
--------------------	--------------------	----------------------------------	-----------------	----------------

Ideal for the following vehicles:

MB Sprinter high roof H2, VW Crafter high roof H2, Fiat Ducato high roof H2, Citroën Jumper high roof H2, Peugeot Boxer high roof H2.

ZSPALU 2000	Ref. no. 801010150	Dim.: (WxDxH): 2000 x 45 x 40 mm	Weight: 3,79 kg	£ 79.54
--------------------	--------------------	----------------------------------	-----------------	----------------

ZSPALU3	Ref. no. 801011361	Dim.: (WxDxH): 3000 x 45 x 40 mm	Weight: 5,20 kg	£ 93.24
----------------	--------------------	----------------------------------	-----------------	----------------

ZSPALUP 3	Ref. no. 801012285	Dim.: (WxDxH): 3000 x 45 x 40 mm	Weight: 4,54 kg	£ 48.49
------------------	--------------------	----------------------------------	-----------------	----------------

Aluminium profiles for individual length adjustment. Usable as stop bars in connection with square brackets.



Restraint pole holder 2 pcs.

ZSPALU AH

Ref. no. 1000001356

Holder-Set for 2 restraint poles.

Due to its spacious drilling template it is possible to screw the holders to the cladding anywhere in the vehicle. That way the floor remains free for freight and the restraint poles are safely and tidily stored away.

£ 24.94

ProSafe restraint pole adapter

PS A SP VPE 2

Ref. no. 6000000613

The set consists of two restraint poles-adapters; available for all ProSafe rails.

Max. strain 200 daN

£ 12.32



Single lashing point for restraint pole ProSafe

EZ S PS

Ref. no. 1000001736

The single lashing point ProSafe is screwed into the longitudinal groove of the restraint pole. The lashing point can be individually moved on the restraint pole and fastened, depending on material loaded.

Max. strain 200 daN

£ 14.29

Floor lashing point for restraint pole ProSafe

BZ SP PS

Ref. no. 6000001260

Added value for your vehicle floor: When screwed on to the floor plate this ProSafe floor lashing point can take a hook and restraint pole.

Max. strain 200 daN.

£ 2.27



LASHING STRAPS

PROSAFE

PROSAFE

Load safety with the new ProSafe lashing system is as simple as never before.

The new ProSafe lashing system is integrated as a standard into the upright of the van racking system. This intelligent possibility for load safety is also incorporated into the frame and floor rails. The additional installation of lashing rails is therefore no longer necessary. For example even gas or refrigerant bottles can be safely secured inside the vehicle.



Lashing strap with ratchet tension lock buckle and ProSafe hook

Fitting for Sortimo ProSafe lashing rails, resilience up to 400 daN, strap width 25 mm, 100% polyester, available in 2 lengths:

PSH RA 3,5
Ref. no. 1000000225
Strap length approx. 3.5 m
£ 21.19

PSH RA 6
Ref. no. 1000000226
Strap length approx. 6.0 m
£ 18.97



Ratchet straps for gas and propane gas bottles

Ratchet strap with ProSafe hook for gas bottle holder.
Delivery without ProSafe lashing rail.

ProSafe lashing strap for gas bottles

PSH GA
Ref. no. 1000000227
Strap length approx. 930 mm
£ 18.14

ProSafe lashing strap for propane gas bottles

PSH PGA
Ref. no. 1000000228
Strap length approx. 770 mm
£ 18.92

Lashing strap with clamp buckle and ProSafe hooks

Fitting for Sortimo ProSafe lashing rails, resilient up to 150 daN, strap width 25 mm, 100% polyester, available in 3 lengths:

PSH KS 1,4
Ref. no. 1000000224
strained up to 150 daN
strap length 1.4 m
£ 7.88

PSH KS 3
Ref. no. 1000000222
strap length 3 m
£ 10.25

PSH KS 6
Ref. no. 1000000223
strap length 6 m
£ 14.00

Lashing strap for lashing rails with ratchet tension lock buckle and fitting

With two sewn-in special fittings, suitable for Sortimo aluminium lashing rails. Resilient up to 800 daN, strap width 25 mm, 100% polyester.

Available in 2 lengths:
ZVRF
Ref. no. 80714343
Strap length approx. 3.5 m
£ 26.22

ZVRF6
Ref. no. 801016218
Strap length approx. 6.0 m
£ 26.81

Lashing strap with clamp buckle

ZVK
Ref. no. 80714114
Strained up to 300 daN
Strap length approx. 3.5 m
Strap width 25 mm
100% polyester
£ 9.76



Flexible edge protection for lashing straps 4 pcs.

ZFKS ZG VPE4
Ref. no. 1000001870
The flexible edge protection made of plastic protects the cargo and prevents the shifting of lashing straps. The edge protection can be attached to the strap for stabilisation. Max. strap width: 100 mm
£ 12.10



Rubber strap

ZLEIGS
Ref. no. 80778925
Dimensions (LxW):
2 m x 3 cm and 4 hooks

£ 17.64

ZLEIG
Ref. no. 801010020
Dim. (LxW): 10 m x 3 cm
£ 56.18

ZLEIGH
Ref. no. 80778963
20 hooks for rubber strap
£ 11.83



Round sling

The application of round slings provides additional lashing possibilities for lashing straps.

Available in 3 lengths:
RS 2T 2M
Ref. no. 801015075
Total length 2 m
£ 12.52

RS 2T 3M
Ref. no. 801015076
Total length 3 m
£ 17.25

RS 2T 4M
Ref. no. 801015077
Total length 4 m
£ 21.88



LOAD SAFETY FOR SORTIMO FLOORS

LOAD SAFETY ACCESSORIES

Added value for your vehicle assembly floor.

Your cargo is protected against slipping with the floor lashing points and the CargoStopp.

Lashing point

ZZM
Ref. no. 80714015
Dim. (LxW): 104 x 70 mm
Max. lashing strain
350 daN (kp).
The lashing points are mounted counter-sunk into the Soboflex safety floor and firmly screwed to the vehicle floor. Delivery includes fixing set.

£ 14.69



Floor lashing point ProSafe

BZ PS
Ref. no. 6000001259
Easy to use load safety thanks to the integrated ProSafe floor lashing point.
Can be combined with all ProSafe lashing straps
Max. strain up to 200

£ 2.27



Floor lashing point restraint pole ProSafe

BZ SP PS
Ref. no. 6000001260
Added value for your vehicle floor: screwed onto the floor plate the ProSafe floor lashing point can accommodate restraint poles as well as ProSafe hooks
Max. strain 200 daN.

£ 2.27



CargoStopp ProSafe

CST PS
Ref. no. 6000001334
The CargoStopp allows for reliable load safety on the vehicle safety floor. It is inserted into the ProSafe floor lashing point with its hook.

£ 18.92



Fixing rail

ZFL
Ref. no. 80714206
Fixing rails made of plastic. Can be screwed onto the vehicle floor and prevents cargo slipping on the vehicle floor.

£ 3.25 each



Anti-slip protective corner

LSE
Ref. no. 801012678
Dim. (WxHxD): 103 x 103 x 65 mm
Sturdy powder-coated metal corners with a non-slip surface. The 4 anti-slip protective corners protect your cargo from slipping.

£ 8.87 each



Lashing eye set

VZA
Ref. no. 80714244
For assembly on the Soboflex safety floor. The assembly floors are already fitted with nut inserts along the centre floor. Max. lashing strain: 400 daN with professional installation in Soboflex®-safety floor.
Delivery includes: 2 lashing eyes, 2 drive-in nuts
£ 12.71



Screw fitting ProSafe

SF PS M8
Ref. no. 6000001006
The screw fitting can be used on all ProSafe rails.
All types of applications can be screwed on to the threaded pin.
Max. strain: 200daN
£ 6.35



Lashing eye

VZA2
Ref. no. 801009977
1 lashing eye for mounting in Sortimo safety floor.
£ 4.63



Single lashing point ProSafe

EZ PS
Ref. no. 6000001231
The single lashing point ProSafe can be inserted individually: mounted on the inside of two uprights of your van racking system, it ensures the load safety of the parts behind with the aid of a ProSafe lashing strap.
The single lashing point can be screwed on to the upright at any height.
Max. strain: 200 daN.

£ 2.27



Universal hook ProSafe

UH PS
Ref. no. 6000001258
The Universal hook can be easily fastened to the front ProSafe upright of the van racking solution.
The 3 storage levels make it particularly practical. Upper level for transporting large pipes or ladders, the middle level for thin poles or small pipes and the lower hook for clothes or bags.

£ 14.78



LOAD SAFETY NETS

PROSAFE

PROSAFE



The **ProSafe load safety nets** can be used directly on the ProSafe floor lashing rails, as well as on the original vehicle lashing points or on the integrated ProSafe floor lashing points. The nets can be stored without difficulty in a broad S-BOXX 05-11 or in an L-BOXX of the van racking solution. The load safety nets are available in three different sizes.

Load safety net ProSafe

ZLSN 1,4x1 PS
Ref. no. 1000001305
Dim. (LxW): 1400 x 1025 mm

£ 210.43

Load safety net ProSafe

ZLSN 1,7x1,1 PS
Ref. no. 1000001306
Dim. (LxW): 1755 x 1150 mm

£ 211.41

Load safety net ProSafe

ZLSN 2,2x1,6 PS
Ref. no. 1000001307
Dim. (LxW): 2275 x 1650 mm

£ 264.14



Mesh size: 100 x 100 mm

The load safety net designed specifically for estate cars is available in two sizes.

Load safety net 800 x 1000

ZLSN 800X1000
Ref. no. 6000001114
£ 36.57

Load safety net 1000 x 1200

ZLSN 1000X1200
Ref. no. 6000001113
£ 44.25



This knotted net can be easily attached to the trailers hooks and prevents e.g. green waste such as leaves from flying about. Larger loaded material can also be covered with this net, therefore enabling additionally secured transport. In cases where trailers have no attachment hooks, we offer sets of 15 hooks for self-installation.

Green waste net for trailer 2.2 x 1.5

ZAGN 2,2
Ref. no.: 6000001547
£ 34.95

Green waste net for trailer 2.7 x 1.5

ZAGN 2,7
Ref. no.: 6000001548
£ 42.88

Green waste net for trailer 3.5 x 2.5

ZAGN 3,5
Ref. no.: 6000001549
£ 62.15



Mesh size: 45mm

Hooked tie plate 50 mm x 40 mm

ZHP VPE 15
Ref. no.: 6000001550
Dim.: 50 x 40 mm
Packaging unit: 15 pieces
£ 21.88



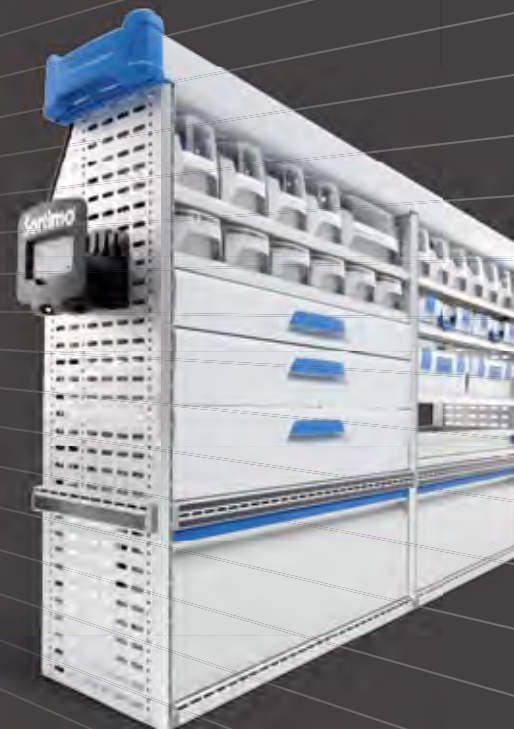


SORTIMO ORIGINAL ACCESSORIES

Accessories, yes but only originals.

Only the original sends the right signal. Order from us directly, whether branch office, stations or web shop.

Reliable.



WORK BENCHES

Make a mobile workshop out of your vehicle

– with one of the various work benches from Sortimo. Depending on the force required the work bench is either mounted onto your van racking solution or screwed

directly onto your vehicle assembly floor. Effectively supplement your work bench by means of a swivel based vice.

Work bench slide

Foldable work bench slide without vice. Available for all system widths and depths.

WBSL 04-3	Ref. no. 1000000271	for left vehicle side / system depth 4	£ 138.77
WBSR 04-3	Ref. no. 1000000270	for right vehicle side / system depth 4	£ 138.77
WBSL 05-3	Ref. no. 1000000273	for left vehicle side / system depth 5	£ 144.26
WBSR 05-3	Ref. no. 1000000272	for right vehicle side / system depth 5	£ 144.26

Work bench hinged

The work benches are available in various versions and make a mobile work shop out of your vehicle.

Heavy duty work bench

WB SKL
Ref. no. 1000000528
Plate dimensions (WxDxH):
280 x 1000 x 36 mm
Heavy duty work bench, foldable
with high foot, without vice.
Height from ground to assembly floor
of vehicle: 490 – 670 mm
For vehicle with a low loading sill.

£ 438.26

Work bench hinged

WB KL
Ref. no. 1000000628
Plate dimensions (WxDxH):
195 x 583 x 30 mm
Work bench hinged, without vice.
Height from floor to work bench
515 mm.

£ 245.39

Heavy duty work bench

WB SKLKF
Ref. no. 1000000527
Plate dimensions (WxDxH):
280 x 1000 x 36 mm
Heavy duty work bench, foldable
with shorter foot, without vice.
Height of ground to assembly floor
of vehicle: 640 – 820 mm
For vehicles with a higher loading
sill.

£ 438.26



Parallel vice 75

ZSP 75
Ref. no. 801010383
Weight: 1.9 kg
Rotating vice with 75 mm jaw width
and an opening width of 44 mm.

It can be mounted directly onto the side
panel of the block and is useful for quick
execution of small work tasks.

£ 55.88

Parallel vice 120

ZSP 120
Ref. no. 801008322
Weight: 9.7 kg
Parallel vice with a 120 mm jaw width,
opening width of 150 mm, incl. pipe holder
suitable for hinged work benches and work
bench slides.

£ 141.93

Parallel vice 140

ZSP 140
Ref. no. 801008323
Weight: 16.0 kg
Parallel vice with a 140 mm jaw width,
opening width 215 mm, incl. pipe holder
combined with a rotating plate ZSD 140
is ideal for use with a heavy duty work
bench WB SKL.

£ 214.37



Swivel vice plate 120

ZSD 120
Ref. no. 801008324
Weight: 2.6 kg
Rotating plate for
parallel vice 120

£ 48.79

Swivel vice plate 140

ZSD 140
Ref. no. 801008325
Weight: 4.5 kg
Rotating plate for
parallel vice 140

£ 66.13



FOLDABLE TABLES AND FOLDING BRACKETS

Folding brackets and aluminium foldable tables allow for additional work space and makes working in vehicles easier.

Folding brackets

ZKK
Ref. no. 801013383
Dimensions (WxDxH):
300 x 25 x 30 mm
A large work surface can be
created to suit your needs with
the aid of folding brackets.
Max. strain up to 200 kg
Pk.unit 2 pieces
Delivery without table top.

£ 55.49



Aluminium foldable table

ZKLAPP
Ref. no. 1000001011
Dimensions (LxW): 640 x 500 mm
Mounted to the side panel of the van
racking solution.
You can create a large work surface
by unfolding the table.
Max. strain up to 25 kg

£ 177.41



RAMP RAILS

Be it a washing machine or a lawn mowing tractor which you wish to transport, with the aid of the ramp rails all heavy and bulky freight is stored away quickly and conveniently. It is available in two lengths both as a rigid or foldable version.

Ramp rails

Aluminium ramp rails with protective edge.
Running table of the rail with anti-slip surface P13
track width 150 mm
outer width 234 mm
height of protective strip 30/42 mm
Available in foldable and non-foldable variation

Ramp rails non-foldable 2000

ZVS 2000
Ref. no. 801009243
Weight: 16.0 kg
1 Pair of ramp rails 2000 mm
Load capacity 380 daN
£ 377.48

Ramp rails non-foldable 2500

ZVS 2500
Ref. no. 801009245
Weight: 20.0 kg
1 Pair ramp rails 2500 mm
Load capacity 380 daN
£ 476.04

Ramp rails foldable 2000

ZVSF 2000
Ref. no. 801009244
Weight: 18.0 kg
1 Pair of ramp rails
Load capacity 300 daN
£ 537.15

Ramp rails foldable 2500

ZVSF 2500
Ref. no. 801009246
Weight: 2.0 kg
1 Pair ramp rails 2500 mm
Load capacity 300 daN
£ 606.14



DIVIDERS FOR DRAWERS

Dividers bring tidiness into both large and small drawers. Standard shelves can also be more efficiently subdivided. Available in sets, individually or as a small components inserts.

④ **Slotted dividers** subdivide the drawers in width. Two drawer brackets are required each time for the fastening of slotted dividers (have to be ordered separately).

SB 04-6 310	Ref. no. 411003659	Slotted divider 62 x 310 mm	£ 2.51	
SB 04-8 310	Ref. no. 411003660	Slotted divider 93 x 310 mm	£ 3.06	
SB 05-6 414	Ref. no. 411003695	Slotted divider 62 x 414 mm	£ 2.04	
SB 05-8 414	Ref. no. 411003696	Slotted divider 93 x 414 mm	£ 3.68	
SB 07-6 622	Ref. no. 411003697	Slotted divider 62 x 622 mm	£ 3.68	
SB 07-8 622	Ref. no. 411003698	Slotted divider 93 x 622 mm	£ 4.63	

③ **Dividers** subdivide the drawers in depth. Divider adapters are required for connecting the dividers to the slotted dividers (have to be ordered separately).

Drawer width 1.5

TB 1.5-62/293	Ref. no. 411011699	Divider 62 x 293 mm	£ 1.33	
TB 1.5-93/293	Ref. no. 411011700	Divider 93 x 293 mm	£ 2.51	

Drawer width 2

TB 20-6 154	Ref. no. 411003651	Divider 62 x 154 mm	£ 0.43	
TB 20-8 154	Ref. no. 411003655	Divider 93 x 154 mm	£ 1.10	

TB 20-6 235	Ref. no. 411003652	Divider 62 x 235 mm	£ 1.02	
TB 20-8 235	Ref. no. 411003656	Divider 93 x 235 mm	£ 1.18	

Drawer width 3

TB 20-6 235	Ref. no. 411003652	Divider 62 x 235 mm	£ 1.02	
TB 20-8 235	Ref. no. 411003656	Divider 93 x 235 mm	£ 1.18	

Drawer width 4

TB 40-6 559	Ref. no. 411003654	Divider 62 x 559 mm	£ 1.72	
TB 40-8 559	Ref. no. 411003658	Divider 93 x 559 mm	£ 2.43	

The **divider sets** include a divider, two slotted dividers, five drawer divider holders, as well as two adapters for slotted dividers, in each set.

Drawer width 2

SBL TBS 24-8	Ref. no. 1000000450	suitable for drawer depth 4 / height 8	£ 8.55
SBL TBS 24-10/12	Ref. no. 1000000451	suitable for drawer depth 4 / height 10 and 12	£ 8.55
SBL TBS 25-6	Ref. no. 1000000458	suitable for drawer depth 5 / height 6	£ 7.13
SBL TBS 25-8	Ref. no. 1000000459	suitable for drawer depth 5 / height 8	£ 8.55
SBL TBS 25-10/12	Ref. no. 1000000460	suitable for drawer depth 5 / height 10 and 12	£ 8.55

Drawer width 3

SBL TBS 34-6	Ref. no. 1000000452	suitable for drawer depth 4 / height 6	£ 7.60
SBL TBS 34-8	Ref. no. 1000000453	suitable for drawer depth 4 / height 8	£ 8.62
SBL TBS 34-10/12	Ref. no. 1000000454	suitable for drawer depth 4 / height 10 and 12	£ 8.62
SBL TBS 35-6	Ref. no. 1000000470	suitable for drawer depth 5 / height 6	£ 7.60
SBL TBS 35-8	Ref. no. 1000000471	suitable for drawer depth 5 / height 8	£ 8.62
SBL TBS 35-10/12	Ref. no. 1000000472	suitable for drawer depth 5 / height 10 and 12	£ 8.62

Drawer width 4

SBL TBS 44-6	Ref. no. 1000000455	suitable for drawer depth 4 / height 6	£ 8.15
SBL TBS 44-8	Ref. no. 1000000456	suitable for drawer depth 4 / height 8	£ 9.41
SBL TBS 44-10/12	Ref. no. 1000000457	suitable for drawer depth 4 / height 10 and 12	£ 9.41
SBL TBS 45-6	Ref. no. 1000000473	suitable for drawer depth 5 / height 6	£ 8.15
SBL TBS 45-8	Ref. no. 1000000474	suitable for drawer depth 5 / height 8	£ 9.17
SBL TBS 45-10/12	Ref. no. 1000000475	suitable for drawer depth 5 / height 10 and 12	£ 9.41

① **Drawer divider holder connects the slotted divider to the drawer**

SBLTB 00-6 2 · Ref. no. 411014577
Divider holder for drawer height 6
£ 0.26

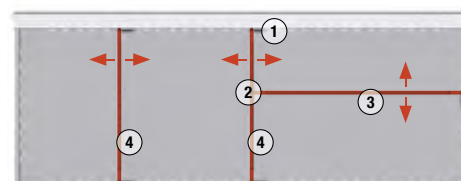
SBLTB 00-8 2 · Ref. no. 411014578
Divider holder for drawer height 8
Divider holder for drawer height 10/12
(fits only the rear)
£ 0.26

SBLTB H10-H12 2.0
Ref. No. 6000000331
Divider holder for drawer height 10/12
(fits only the front)
£ 0.26

② **Adapter for slotted divider connects the divider to the slotted divider**

ATB 9 · Ref. no. 491003938
Adapter for divider
£ 0.35

DATB 9 · Ref. no. 491003307
Double adapter for divider
£ 0.35



- ① Drawer divider holder
- ② Adapter for slotted divider
- ③ Divider for subdivision of depth
- ④ Slotted divider for subdivision in width



Small component insert for drawers

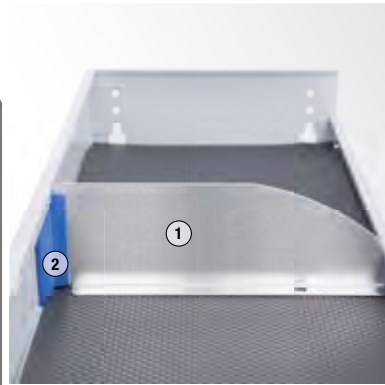
SBL TE 10
Ref. no. 411016008
Small component insert for drawers width 2 / depth 4
£ 3.14



DIVIDERS FOR SHELF TRAYS AND OPEN SHELVES WITH BORDERS

CASE FIXING CLAMP AND LIGHT WEIGHT LONG COMPONENT TRAY

ORIGINAL ACCESSORIES



① Divider for open shelf with border

TB FR 3	Ref. no. 401010278	Divider for open shelf with border depth 3	£ 3.92
TB FR 4	Ref. no. 401010279	Divider for open shelf with border depth 4	£ 4.86
TB FR 5	Ref. no. 401010280	Divider for open shelf with border depth 5	£ 5.88
TB FR 7	Ref. no. 401010281	Divider for open shelf with border depth 7	£ 10.58

A divider holder is required for every divider.

② Divider holder

TBH FW v 2.0
Ref. no. 6000000475

£ 0.41



③ Divider for shelf trays

TB FW 3	Ref. no. 401002730	Divider for shelf tray with a depth of 3	£ 3.14
TB FW 4	Ref. no. 401002731	Divider for shelf tray with a depth of 4	£ 3.92
TB FW 5	Ref. no. 401002733	Divider for shelf tray with a depth of 5	£ 5.02
TB FW 7	Ref. no. 401005309	Divider for shelf tray with a depth of 7	£ 10.58

A front and a rear divider holder are required for each divider

④ Rear divider holder

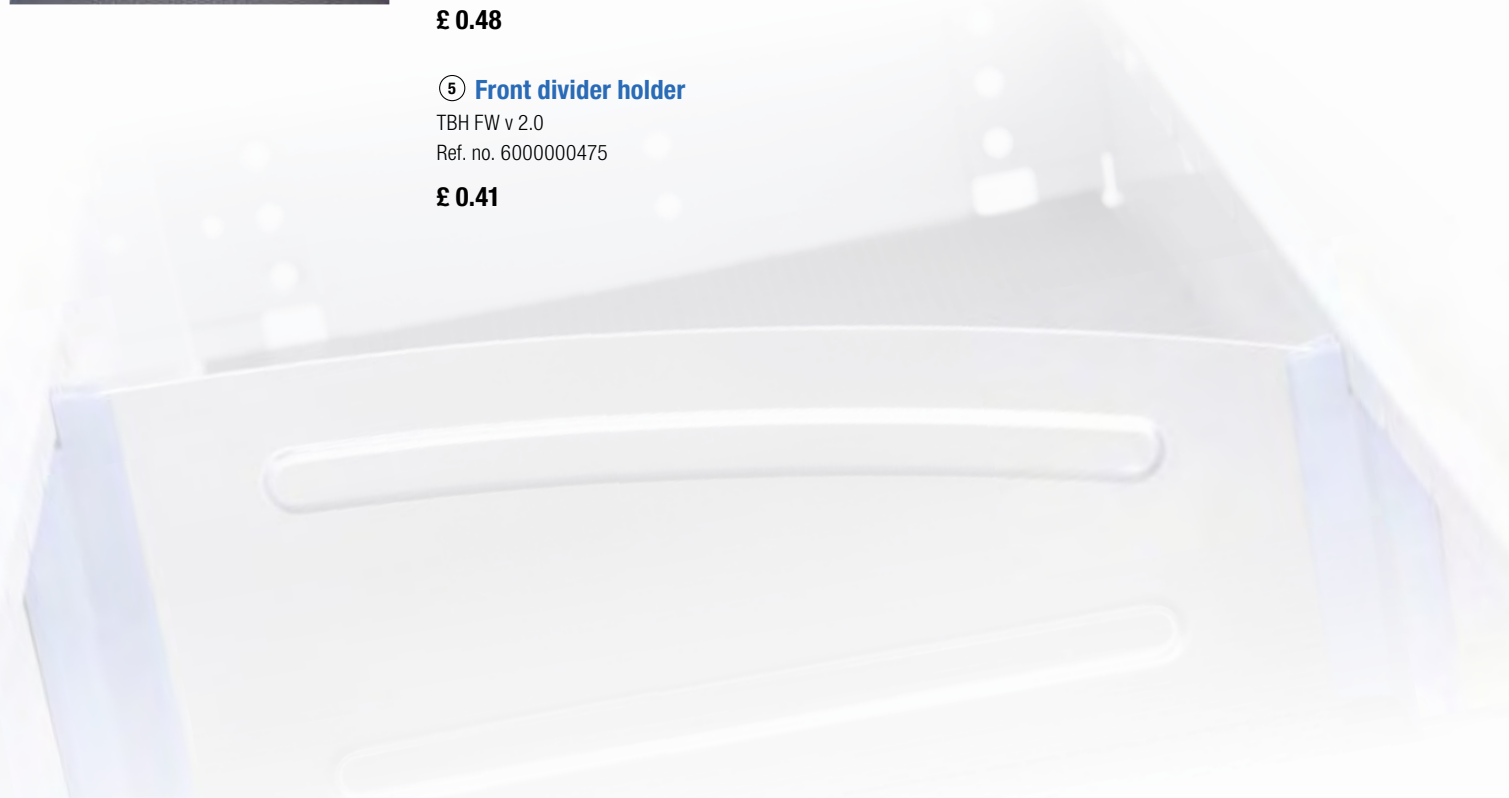
TBH FW H 2.0
Ref. no. 6000000473

£ 0.48

⑤ Front divider holder

TBH FW v 2.0
Ref. no. 6000000475

£ 0.41



The case clamp is an easy to use, variable clamping mechanism for cases, boxes and containers of various sizes. It is fitted into the van racking system. With the case clamp, even containers which were not originally designed for the Globelyst system can be integrated, transported and removed safely .

The ergonomic long components tray is manufactured from a new composite material and is best suited for the transport of long components. Due to the sliding mechanism, the new cover flap made from hard plastic open towards the floor in a space saving way. Therefore, even bulky long components can be stored securely and effortlessly.

Composite long component tray

Suitable for the transport of long components inside the vehicle.
The Composite long component tray is available in various lengths up to 3 metres.
For further information and your personal quotation please contact our sales consultants.

Anti-rattle mat long components tray

ARM LGW
Ref. no. 65236579
Dim.: 3300 x 260 mm
£ 16.70



Aerosol can holder

It is simply clipped onto a divider and enables quick and safe storage of aerosol cans. Integrated bristles enable flexible hold.

SDH 04-0

Ref. no. 801012774
Dim. (WxDxH): 311 x 33 x 18 mm
Aerosol can holder shelf tray/
open shelf with border depth 4
Two holders are required.
£ 4.34

SDH 05-0

Ref. no. 801012775
Dim. (WxDxH): 415 x 33 x 18 mm
Aerosol can holder shelf tray/
open shelf with border depth 5
Two holders are required.
£ 5.32

Case fixing clamp

Easy to use, variable clamping mechanism for cases or containers.
It can be fitted into the van racking system at any height and is available in all system widths.
Please enquire separately.

from £ 78.36

ANTI-RATTLE MATS

SECURE HOLD

The anti-rattle mats not only dampen down noise during travel but also protect the contents and drawer as well.

In addition they can also be used in shelf trays and open shelves with borders.

ORIGINAL ACCESSORIES

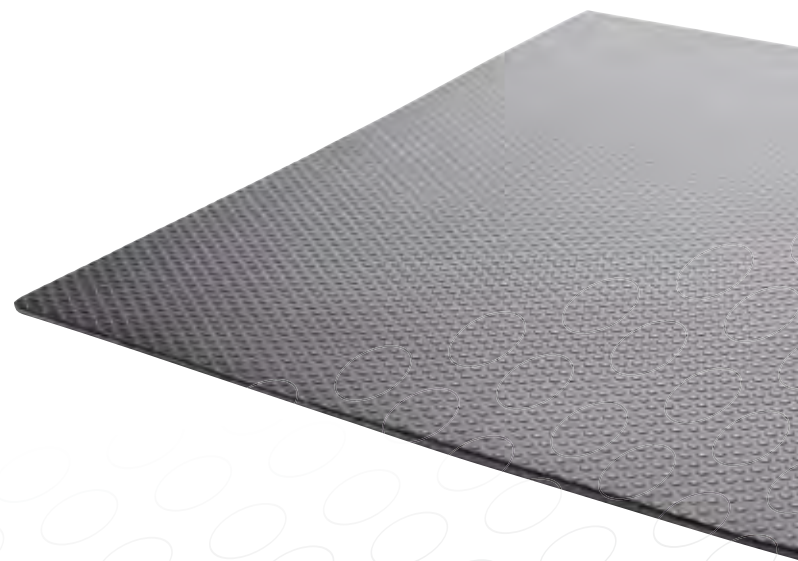
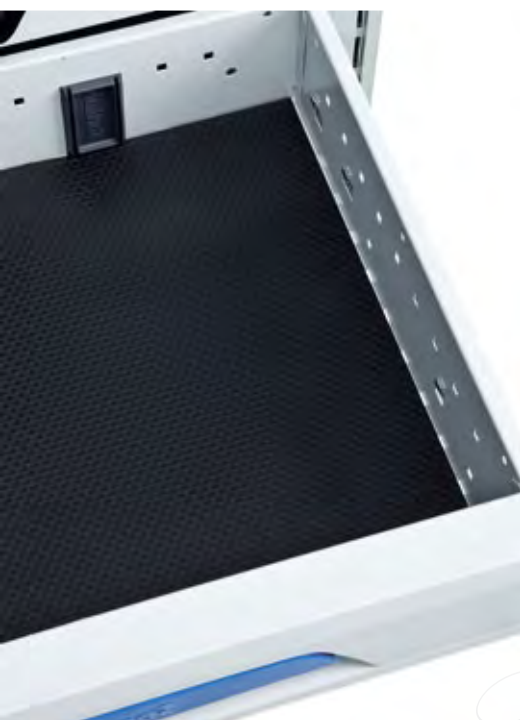
ORIGINAL ACCESSORIES

Anti-rattle mats for drawers

ARM S 24-0	Ref. no. 651003661	suitable for drawer width 2 / height 4	414 x 310 x 4 mm	£ 3.29
ARM S 34-0	Ref. no. 651003662	suitable for drawer width 3 / height 4	656 x 310 x 4 mm	£ 4.55
ARM S 44-0	Ref. no. 651003663	suitable for drawer width 4 / height 4	898 x 310 x 4 mm	£ 5.96
ARM S 25-0	Ref. no. 651003664	suitable for drawer width 2 / height 5	414 x 414 x 4 mm	£ 4.78
ARM S 35-0	Ref. no. 651003665	suitable for drawer width 3 / height 5	656 x 414 x 4 mm	£ 6.82
ARM S 45-0	Ref. no. 651003666	suitable for drawer width 4 / height 5	898 x 414 x 4 mm	£ 8.78
ARM S 27-0	Ref. no. 651005159	suitable for drawer width 2 / height 7	622 x 414 x 1 mm	£ 8.55
ARM S 37-0	Ref. no. 651005160	suitable for drawer width 3 / height 7	622 x 656 x 1 mm	£ 12.62
ARM S 47-0	Ref. no. 651005161	suitable for drawer width 4 / height 7	622 x 898 x 1 mm	£ 16.70

Anti-rattle mats for shelf trays and open shelves with border

ARM FW 13-0	Ref. no. 651002948	suitable for shelf tray width 1 / depth 3	219 x 244 x 4 mm	£ 1.65
ARM FW 14-0	Ref. no. 651002955	suitable for shelf tray width 1 / depth 4	219 x 350 x 4 mm	£ 2.59
ARM FW 15-0	Ref. no. 651002964	suitable for shelf tray width 1 / depth 5	219 x 455 x 4 mm	£ 3.61
ARM FW 17-0	Ref. no. 651005507	suitable for shelf tray width 1 / depth 7	219 x 658 x 4 mm	£ 7.60
ARM FW 23-0	Ref. no. 651002950	suitable for shelf tray width 2 / depth 3	460 x 244 x 4 mm	£ 2.51
ARM FW 24-0	Ref. no. 651002959	suitable for shelf tray width 2 / depth 4	460 x 350 x 4 mm	£ 4.39
ARM FW 25-0	Ref. no. 651002965	suitable for shelf tray width 2 / depth 5	460 x 455 x 4 mm	£ 6.43
ARM FW 27-0	Ref. no. 651005146	suitable for shelf tray width 2 / depth 7	460 x 658 x 4 mm	£ 10.58
ARM FW 33-0	Ref. no. 651002951	suitable for shelf tray width 3 / depth 3	703 x 244 x 4 mm	£ 4.39
ARM FW 34-0	Ref. no. 651002960	suitable for shelf tray width 3 / depth 4	703 x 350 x 4 mm	£ 6.43
ARM FW 35-0	Ref. no. 651002966	suitable for shelf tray width 3 / depth 5	703 x 455 x 4 mm	£ 8.15
ARM FW 37-0	Ref. no. 651005148	suitable for shelf tray width 3 / depth 7	703 x 658 x 4 mm	£ 12.62
ARM FW 43-0	Ref. no. 651002952	suitable for shelf tray width 4 / depth 3	945 x 244 x 4 mm	£ 6.43
ARM FW 44-0	Ref. no. 651002961	suitable for shelf tray width 4 / depth 4	945 x 350 x 4 mm	£ 8.15
ARM FW 45-0	Ref. no. 651002967	suitable for shelf tray width 4 / depth 5	1187 x 244 x 4 mm	£ 10.11
ARM FW 47-0	Ref. no. 651005149	suitable for shelf tray width 4 / depth 7	945 x 648 x 4 mm	£ 14.66
ARM FW 54-0	Ref. no. 651002962	suitable for shelf tray width 5 / depth 4	1187 x 350 x 4 mm	£ 10.11
ARM FW 55-0	Ref. no. 651002968	suitable for shelf tray width 5 / depth 5	1187 x 455 x 4 mm	£ 12.07
ARM FW 63-0	Ref. no. 651002954	suitable for shelf tray width 6 / depth 3	1422 x 244 x 4 mm	£ 10.11
ARM FW 64-0	Ref. no. 651002963	suitable for shelf tray width 6 / depth 4	1422 x 350 x 4 mm	£ 12.07
ARM FW 65-0	Ref. no. 651002969	suitable for shelf tray width 6 / depth 5	1422 x 455 x 4 mm	£ 14.03



PERFORATED ALUMINIUM PANEL ACCESSORIES

As a result of the professional and elegant perforated aluminium panel system more use can be made of your van racking solution. Thanks to the new oblong hole

design multiple accessories can be easily snapped into place, anything from hose holders to storage pockets in various sizes.

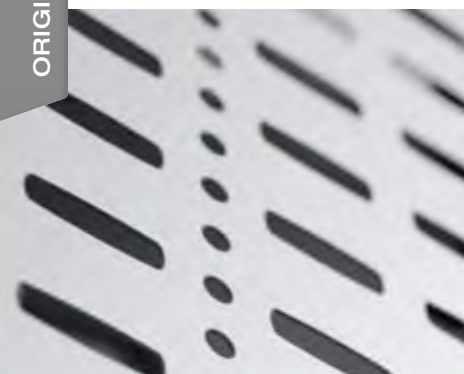
Aerosol-cans can be securely stowed away in your vehicle with the aid of storage pockets.

Storage pockets manufactured from plastic snap easily into place on the perforated aluminium panel system and provide additional space for tools with the integrated terminal tool strip.

The storage trays/pockets for paper made out of metal and plastic can be screwed onto the face end of the perforated panel of the van racking system. This enables easy organisation of brochures or order documents which are quickly at hand.

ORIGINAL ACCESSORIES

ORIGINAL ACCESSORIES



Perforated aluminium panel systems

ALP 1X1.25
Ref. no. 6000000246
Dim.: 1000 x 1250 mm
£ 74.12

ALP 2X1
Ref. no. 6000000247
Dim.: 2000 x 1000 mm
£ 114.33

ALP 2X1 VERTICAL
Ref. no. 6000001077
Dim.: 2000x1000mm
£ 107.43



Hose holder Globelyst

ZSH
Ref. no. 801010976
Dim. (WxDxH): 204 x 113 x 201 mm
Globelyst hose holder made out of plastic with a business card pocket and address field. Hoses or electrical cables are safely stored away and quickly at hand. It is hooked into the side panel or screw mounted.
£ 15.97



Multi-functional Sortimo panel

MULTIKO
Ref. no. 801015080
Dim. (WxDxH): 216,9 x 29 x 167,4 mm
Material: ABS plastic
The multi-functional panel with integrated clothes hooks, space for pens, folding ruler and other small components.
£ 1.97

Edge profile for perforated aluminium panel system

ZLPKS
Ref. no. 6000001759
Edge profile, Pk. unit 1 m for sheet metal thickness 1.0 – 1.5 mm. Protects edges against damage and prevents injuries.
£ 3.58



Bottle holder

FH 1,5 L
Ref. no. 801011367
Bottle holder for up to 1.5 litres
Mounted on the perforated panel.
Keeps your drinking bottle within reach.
£ 15.67



Small hose holder

ZSHK
Ref. no. 80713506
Dim. (WxDxH): 188 x 70 x 147 mm
£ 16.76



Medium hose holder

ZSHM
Ref. no. 80713599
Dim. (WxDxH): 266 x 108 x 201 mm
£ 32.03

Large hose holder

ZSHG
Ref. no. 80713513
Dim. (WxDxH): 348 x 144 x 257 mm
£ 39.13



Storage pocket

AB 03-7
Ref. no. 801003699
Dim. (WxDxH): 251 x 85 x 119 mm
Weight: 0.6 kg
£ 22.27



Storage pocket

AB 05-7
Ref. no. 801003701
Dim. (WxDxH): 459 x 85 x 119 mm
Weight: 0.9 kg
£ 26.81



Metal storage pocket for paper

AB 03-17
Ref. no. 801003703
Dim. (WxDxH): 241 x 75 x 327 mm
Weight: 0.6 kg
£ 23.26

Storage pocket hard plastic

AB 04-7 KU
Ref. no. 6000001329
Dim. (WxDxH): 152,8 x 133,3 x 123 mm
Weight: 0.4 kg
£ 20.81



Plastic storage pocket for paper

AB 04-12K
Ref. no. 801016054
Dim. (WxDxH): 345 x 75 x 253 mm
Weight: 0.6 kg
£ 9.86



MORE THAN JUST A HOOK

The new anthracite-coloured hooks made from sturdy ABS plastic are exactly designed to fit into the oblong holes. They securely snap into place through two parallel holes in the Sortimo perforated aluminium side

panel and distribute the load perfectly onto the panel. The hooks and perforated panels have been developed especially to complement the dynamic load resilience in vehicles.

ORIGINAL ACCESSORIES



9 piece hook set for perforated aluminium panel

HS9 SBAL
Ref. no. 6000000404
consists of:
Single hook 35
Hook length: 35 mm
2x Single hooks 50
Hook length: 50 mm
Single hook 75
Hook length: 75 mm
Double hook 50
Hook length: 50 mm
Double hook 75
Hook length: 75 mm
Round hook 75
Hook length: 75 mm
Tool clamp 12
Clamping area: 12-18 mm
Tool clamp 18
Clamping area: 18-24 mm

£ 23.21



Single hook 35 perforated aluminium panel 2.0

HS9 SBAL 1
Ref. no. 6000000981
Hook length: 35 mm

£ 3.06



Single hook 50 perforated aluminium panel 2.0

HS9 SBAL 2
Ref. no. 6000000982
Hook length: 50 mm

£ 3.25



Single hook 75 perforated aluminium panel 2.0

HS9 SBAL 3
Ref. no. 6000000983
Hook length: 75 mm

£ 3.55



Tool clamp 12 perforated aluminium panel 2.0

HS9 SBAL 7
Ref. no. 6000000987
Clamping area: 12-18 mm

£ 3.06



Double hook 50 perforated aluminium panel 2.0

HS9 SBAL 4
Ref. no. 6000000984
Hook length: 50 mm

£ 3.55



Double hook 75 perforated aluminium panel 2.0

HS9 SBAL 5
Ref. no. 6000000985
Hook length: 75 mm

£ 3.75



Round hook 75 perforated aluminium panel 2.0

HS9 SBAL 6
Ref. no. 6000000986
Hook length: 75 mm

£ 3.55



Tool clamp 18 perforated aluminium panel 2.0

HS9 SBAL 8
Ref. no. 6000000988
Clamping area: 18-24 mm

£ 3.06

ORIGINAL ACCESSORIES

HOOKS AND HOLDERS

Mounting accessories

With the practical mounting accessories for brooms, shovels, cables or clothes, we have the right solution,

tools and aids to securely help you transport everything to your site of operation so that you always have everything quickly at hand.

ORIGINAL ACCESSORIES



Aluminium wall hook big

ZWH3
Ref. no. 801012165
Wall hook with a wide supporting surface area.
Dim.: 170 x 225 mm

£ 6.31

Aluminium wall hook

available in two sizes:
ZWH1
Ref. no. 801012163
Dim.: 80 x 120 mm
£ 2.76
ZWH2
Ref. no. 801012164
Dim.: 115 x 140 mm
£ 4.04



Cable reel holder

ZKH
Ref. no. 80713094
Multi-purpose unit to secure hoses or extension cables to long component and shelf trays.

£ 10.15

Ladder bracket

ZLH 1
Ref. no. 801009909
Used for hooking ladders onto the van racking system. Screwed to the upright of the Globelyst system.

£ 24.25



Overhead hook

ZDH1
Ref. no. 801012834
For mounting all long handled tools e.g. brooms, shovel, etc. just under the vehicle ceiling/lining.

£ 28.09



Coat hook

ZKH1
Ref. no. 80713087
Packaging unit 3 pieces.
Can be screw-mounted into the side panel of the van racking system.

£ 5.82



Universal hook ProSafe

UH PS
Ref. no. 6000001258
The universal hook can be easily fastened to the front ProSafe upright of the van racking system.

The 3 storage levels make it extremely practical. Upper level for transporting large pipes or ladders, the middle level for thin poles or small pipes and the lower hook for clothes or bags.

£ 14.78

Pad and pen holder metal

ZBSM
Ref. no. 801017807
Holder for writing pad and pen.
Delivery without writing surface.

£ 7.10



Terminal tool strip

ZWKL
Ref. no. 801012160
Dim. (WxHxD): 340 x 30 x 45 mm
It is screwed onto the face end of the van racking system.
The tools are securely stored during transport and quickly at hand for work.

£ 18.73



Threaded bolt holder

ZGSH 04-10
Ref. no. 801012176
For secure and organised transport of threaded bolts.

£ 26.91



ORIGINAL ACCESSORIES

Tool clips

ZTC10	Ref. no. 801013272	Tool clip 10 mm	£ 2.27
ZTC13	Ref. no. 801013273	Tool clip 13 mm	£ 2.27
ZTC16	Ref. no. 801013274	Tool clip 16 mm	£ 2.27
ZTC19	Ref. no. 801013275	Tool clip 19 mm	£ 2.27
ZTC22	Ref. no. 801013276	Tool clip 22 mm	£ 2.27
ZTC25	Ref. no. 801013277	Tool clip 25 mm	£ 2.27
ZTC28	Ref. no. 801013278	Tool clip 28 mm	£ 2.27
ZTC32	Ref. no. 801013279	Tool clip 32 mm	£ 2.56
ZTC38	Ref. no. 801013280	Tool clip 38 mm	£ 3.06
ZTC44	Ref. no. 801013281	Tool clip 44 mm	£ 3.65
ZTC64	Ref. no. 801013282	Tool clip 64 mm	£ 4.24
ZTC76	Ref. no. 801013283	Tool clip 76 mm	£ 6.01
ZTC89	Ref. no. 801013284	Tool clip 89 mm	£ 7.88
ZTC102	Ref. no. 801013285	Tool clip 102 mm	£ 10.64
ZTC114	Ref. no. 801013286	Tool clip 114 mm	£ 15.57



SPECIAL HOLDERS

CANISTERS AND COMPLEMENTARY HOLDERS

ORIGINAL ACCESSORIES



Locking pins

For securing transport of round or semi-round objects such as e.g. standpipes, hydrant wrenches etc. Available in three sizes:

ZVSL 1
Ref. no. 801011062
Interior dimensions: 89 x 30 x 89 mm
£ 37.16

ZVSL 2
Ref. no. 801011063
Interior dimensions: 59 x 30 x 63 mm
£ 34.50

ZVSL 3
Ref. no. 801011064
Interior dimensions: 50 x 30 x 50 mm
£ 33.21



Aluminium strip

ZUS
Ref. no. 801012166
Aluminium mounting strip for flexible placement of the universal holder, length 90 cm.

£ 21.78



Universal holder

The universal holder can be mounted on the aluminium strip or directly to the wall.

Available in 2 sizes:
ZUG1
Ref. no. 801012161
Universal holder \varnothing 20 – 30 mm
£ 6.90

ZUG2
Ref. no. 801012162
Universal holder \varnothing 30 – 40 mm
£ 7.39

Clamping device

Zinc plated steel with a rubber strap, can be mounted on the perforated aluminium panel. Available in two sizes:

ZSG 1
Ref. no. 801009976
Clamping device
 \varnothing 15 – 30 mm
£ 8.87

Spare rubber strap
ZSG 1E
Ref. no. 491010015
£ 2.59

ZSG 2
Ref. no. 80713858
Clamping device
 \varnothing 20 – 50 mm
£ 7.98

Spare rubber strap

ZSG 2E
Ref. no. 491010016
£ 2.59

Plastic cones

In combination with a locking pin, the plastic cone can be used for fastening standpipes to the floor.

Plastic cone size "B"
KUKE B
Ref. no. 6000000079
Plastic cone for B pipes.
Dimensions: 75 x 40 mm
£ 5.91

Plastic cone size "C"
KUKE C
Ref. no. 6000000080
Plastic cone for B pipes.
Dim.: 55 x 40 mm
£ 5.72



For the secure transport of fuel there are two different size canisters available. The canister can be easily mounted on the van racking system with the appropriate holder.



Fuel canister 10 l

TSK10
Ref. no. 801008042
Fuel canister 10 l incl. plastic spout. Can be secured safely with the canister holder 10 l to the van racking system.
£ 24.74



Canister holder 10 l

TSH10
Ref. no. 80779229
Holder for 10 l fuel canister, with an integrated lashing strap.
£ 37.55

Spare rubber sealing for fuel canister

ET DTK
Ref. no. 801015138
Spare sealing for fuel canister.
£ 7.59



Fuel canister 20 l

TSK20
Ref. no. 801009986
Fuel canister 20 l made of steel, TÜV, GS certified.
£ 33.12



Canister holder 20 l

TSH20
Ref. no. 80779236
Holder for 20 l fuel canister, with an integrated lashing strap.
£ 44.84

Fuel canister nozzle incl. holder

TSS
Ref. no. 801009987
Suitable for Sortimo canister 20 l. Aids exact positioning when pouring fuel.
£ 17.94



ORIGINAL ACCESSORIES

CLEANING ACCESSORIES

Cleaning accessories from Sortimo have everything you need from paper dispensers to waste bins in order to do a good and clean job.

ORIGINAL ACCESSORIES



Water canister set

Set includes wide necked water canister, holder and drain cock. (delivery without PVC hose)
Available in 5 l and 10 l

ZWA 5
Ref. no. 80779205
Water canister set 5 l
Dim.: 295 x 165 x 295 mm

£ 67.32

ZWA 10
Ref. no. 80779199
Water canister set 10 l
Dim.: 290 x 160 x 400 mm

£ 76.09

Wide necked canister

Canister available in two sizes

ZWHK5
Ref. no. 801009995
Wide necked canister 5 l
Dim.: 290 x 160 x 290 mm

£ 22.57

ZWHK10
Ref. no. 801009993
Wide necked canister 10 l
Dim.: 290 x 160 x 290 mm

£ 31.34

Tap

ZHWK
Ref. no. 801009992
Tap for wide necked canister

£ 11.43

PVC hose for water canister set

ZSPVC1
Ref. no. 80779212
PVC hose for the water canister set used to drain water out of a vehicle.
Length: 1 m

£ 5.72



3-step handcare system

Ref. No. 7100000005
3-step waterless handcare system: protective cream, general hand cleaner, hand sanitiser.

£ 67.47

12 V hot and cold handwash

Ref. No. 7100000004
12 V hot and cold handwash

£ 228.34



Pump dispenser with hand cleaning cream

ZHSK
Ref. no. 80711007
Pump dispenser incl. wall holder and 3 l hand cleaning cream.
Cleans even without water!
Biodegradable, protects the skin, effective cleansing of oil, fats, tar, bitumen, printing ink etc.

£ 51.55



Tissue dispenser

ZREIT
Ref. no. 80778949
Dimensions (LxW): 110 x 195 mm
Tissue dispenser no holder.

£ 24.94



Hand cleaning cream

ZHSK/ZHR
Ref. no. 801010017
3 l Hand cleaning cream
Refill set

£ 16.76



Waste bin

ABE
Ref. no. 80711144
Dimensions (WxDxH): 190 x 180 x 300 mm
Waste bin incl. wall holder

£ 31.34



Waste bin bags

AB
Ref. no. 80711076
Waste bin bags, pack of 50, made from recycling material

£ 4.83

Paper roll dispenser

ZRG
Ref. no. 1000000198
Roll holder large (paper included). A self clamping function prevents unreeling during the journey. Suitable for commercial standard rolls with a width of 240 mm and max. 600 mm in diameter of roll. It is screwed onto the van racking system.

£ 40.51

Paper roll blue

ZPRG
Ref. no. 6000000076
Packaging unit 2 rolls, 255 metres each, double layered
Sheet size 22 x 35 cm

£ 26.32

Paper towel dispenser

ZHA
Ref. no. 80711106
Screw-mounted to the van racking system
Dimensions (LxW): 285 x 130 mm
Paper towel green

£ 28.68

Paper roll green

ZPHA
Ref. no. 6000000077
Packaging unit 10 rolls, 56 metres each, double layered
Sheet size: 23 x 28 cm

£ 45.93



WARNING ACCESSORIES

With our warning accessories, you have all the required products at hand in case of a breakdown or accident and **you also meet the current legal requirements.**

FIRE EXTINGUISHERS AND FIRST AID BOXSES

It is highly recommended to carry a fire extinguisher in a commercially used vehicle.



Traffic cone lashing set

ZLKS1
Ref. no. 80711137
Lashing set in vehicle for 1-5 traffic cones
Strap length = 1.63 m (delivery without cones)

£ 31.44

High visibility jacket

WAVE
Ref. no. 80720009
High visibility jacket in accordance with EN471 / DIN 30711

£ 7.10



Warning triangle

WADR
Ref. no. 801009983
Foldable warning triangle in accordance with DIN 23641, delivered in tabular

£ 16.66



Reflective warning label, 141 mm x 9 m, leftw.

WAMA li
Ref. no. 6000000018
Dim.: 141 mm x 9 m

£ 189.73



Reflective warning label, 141 mm x 9 m, rightw.

WAMA re
Ref. no. 6000000019
Dim.: 141 mm x 9 m

£ 189.73

Warning halogen beacon 12/24V, magnetic base

KLRU 12/24 MF
Ref. no. 6000000285
Diameter: 155 mm
Height: 185 mm

£ 108.42



Signal traffic cone, fold 400mm

SIKE 400 F
Ref. no. 6000000082
Dim.: 250 x 250 x 55 mm

£ 81.71



Signal traffic cone, fold 700mm

SIKE 700 F
Ref. no. 6000000111

£ 124.19



Auto fire extinguisher 2 kg

ZF 2
Ref. no. 7100000010
Auto fire extinguisher 2 kg
Powder extinguisher for fire classes A, B, C. High level of functional safety due to interior pressure cartridge.
Operates from -20°C to +60°C

£ 20.64

L-BOXX 102 First Aid BOXX

LB 102 EH
Ref. no. 121018031
Equipped in accordance with DIN 13157
Weight: 3.2 kg

£ 78.16



i-BOXXES FOR ALL EMERGENCIES

You are well equipped for all contingencies with the new i-BOXX sets. Regardless of whether it is the load security basic equipment set, first aid box or accident and emergency equipment, with the equipped i-BOXXes from Sortimo the appropriate equipment is always at hand.

The i-BOXX wall holder is especially practical. Simply screw-mounted to the perforated aluminium side panel or the vehicle itself, the i-BOXX snaps easily into place.

ORIGINAL ACCESSORIES

ORIGINAL ACCESSORIES



i-BOXX 53 Construction site first aid BOXX DIN13157

I-53 BVK
Ref. no. 1000001455
Dim.: 316 x 367 x 53 mm
i-BOXX fulfils the DIN13157 standard for construction site first aid boxes.
(Two first aid boxes complying with the DIN13157 standard replace one first aid box complying with DIN 13469 standard.)

£ 44.25

i-BOXX 72 Car-safety I-72 CS

Ref. no. 1000001457
Dim.: 316 x 367 x 72 mm
i-BOXX equipped with estate car bandaging material in accordance with DIN13164, 2 high visibility jackets in accordance with EN471/DIN30711 and a mini-warning triangle in accordance with ECE-R27.

£ 50.27



i-BOXX 72 Load security LCV I-72 LASI-T

Ref. no. 1000001458
Dim.: 316 x 367 x 72 mm
i-BOXX includes basic equipment for load security in a light commercial vehicle.
Consists of two lashing straps with ratchet ProSafe and two lashing straps with clamp buckles ProSafe (usable on original lashing points in vehicle and on Sortimo van racking solution), as well as 4 anti-slip mats for pallets and 4 flexible edge profiles.

Incl. practical Sortimo tips with lots of useful instructions to do with load security in your LCV.

£ 96.98

i-BOXX 72 Load security for estate cars I-72 LASI-PKW

Ref. no. 1000001459
Dim.: 316 x 367 x 72 mm
i-BOXX includes basic equipment for load security in an estate car.
Consists of a load security net (1200 x 1000 mm), 2 lashing straps with clamp buckles and an anti-slip mat (750 x 500 mm).
Incl. practical Sortimo tips with lots of useful instructions to do with load security in your estate car.

£ 90.87



i-BOXX 53 Estate car first aid box DIN13164

I-53 PKWVK
Ref. no. 1000001456
Dim.: 316 x 367 x 53 mm
i-BOXX fulfils the DIN 13164 standard for estate cars first aid boxes. More organisation due to small component insert in the i-BOXX.

£ 34.10



i-BOXX Adaptor plate I-WH

Ref. no. 6000001008
Your i-BOXX is securely locked in place during transport with the aid of the i-BOXX holder. The holder can be screw-mounted to the perforated side panel or to the vehicle itself.

£ 18.53



TELESCOPIC LADDERS

Our telescopic ladders can be stowed away in the smallest of areas and even fit into a car boot. As the ladder can be extended to 3.3 metres it enables a secure work environment up to a height of 3.7 metres.

With an additional practical bracket the telescopic ladder can be easily mounted to either the van racking system or on to the rear door.



Telescopic-combination ladder 2.3 m

ZTCL23
Ref. no. 801012159
Dim. (WxDxH): 610 x 165 x 710 mm
Weight: 14 kg
Ladder length closed: 0.79 m
Ladder length extended: 2.3 m
Width: 0.48 m
Load capacity: 150 kg
Max. work height 3.7 m,
8 rungs

£ 409.02

Telescopic-combination ladder 1.7 m

ZTCL17
Ref. no. 6000000078
Dim. (WxDxH): 610 x 165 x 680 mm
Weight: 10 kg
Ladder length closed: 0.68 m
Ladder length extended: 1.7 m
Width: 0.48 m
Load capacity: 150 kg
Max. work height 3.0 m,
6 rungs

£ 295.68

Telescopic ladder 3.3 m

ZTL33
Ref. no. 80714909
Dim. (WxDxH): 490 x 75 x 780 mm
Weight: 10.4 kg
Small when transported but long when in use. The telescopic ladder with 11 rungs combines both attributes perfectly together.
Ladder length closed: 0.78 m
Ladder length extended: 3.3 m
Width: 0.49 m
Load capacity: 150 kg
Max. work height 4.4 m.

£ 340.03

Safety foot

ZTLF
Ref. no. 80714923
Weight: 0.96 kg
1 pair of safety bases per Telescopic ladder 3.3 m
Height adjustable up to max. 225 mm, suitable for stairs.
Non-slip base; prevents any movement on a slippery or uneven surface.

£ 74.12



Telescopic ladder bracket

ZTLH4
Ref. no. 80779281
Weight: 0.50 kg
The ladder bracket is for the telescopic ladder ZTL33. It can be easily mounted to the rear door, storage area or on to the perforated side panel of the van racking system. Delivery without ladder (not suitable for telescopic combination ladder).

£ 42.09



Top support for telescopic ladder 1 pair

ZTLTS
Ref. no. 6000001544
Top support enables a ladder to be used on corners as well as on curved sections which creates an even safer working environment.

£ 94.86



Carrier bag telescopic ladder

ZTLT
Ref. no. 80714886
Weight: 0.54 kg
Carrier bag for telescopic ladders up to 3.3m. The ladder remains clean and tidily packaged in the bag and can be carried easily with a belt.

£ 30.75



Telescopic ladder spare parts (see illus.)

ET TELE FÜ	Ref. no. 801013820	1 Pair of replacement rubber feet for tele. lad. 3.3 m	£ 19.51
ET TELE ZU	Ref. no. 801013821	1 Pull ring for the telescopic ladder	£ 3.94
ET TELE AK	Ref. no. 801013822	1 Protective cap suitable all telescopic ladders	£ 10.74
ET TELECO GRUFU	Ref. no. 801013824	1 complete base support for combination ladders	£ 49.28

VENTILATION SYSTEMS

In the case of transport of gas bottles, vehicle ventilation systems with free openings are mandatory. Sortimo provides a ventilation system which can be used for both upward and downward ventilation depending on the density of the gas being transported.

Due to the aerodynamic design the fresh air flow rate demonstrates outstanding results which exceed the legal requirements substantially.



Side vent



Floor vent



Roof vent



Large, rotatable roof vent



Small roof vent

DLS
Ref. no. 801016208
£ 29.37



Roof vent

DL
Ref. no. 80721099
£ 82.89



Side vent black

SEL
Ref. no. 80721082
Dim.: (WxDxH) 201 x 452 x 80 mm
£ 70.77

Side vent white

SEL W
Ref. no. 801015695
Dim.: (WxDxH) 201 x 452 x 80 mm
£ 70.77

Round floor vent

BL RU
Ref. no. 6000001283
ø 100mm
£ 31.46



Ventilation plate small

ZLB 3
Ref. no. 80721037
Dim.: 116 x 227 x 11 mm
£ 11.43

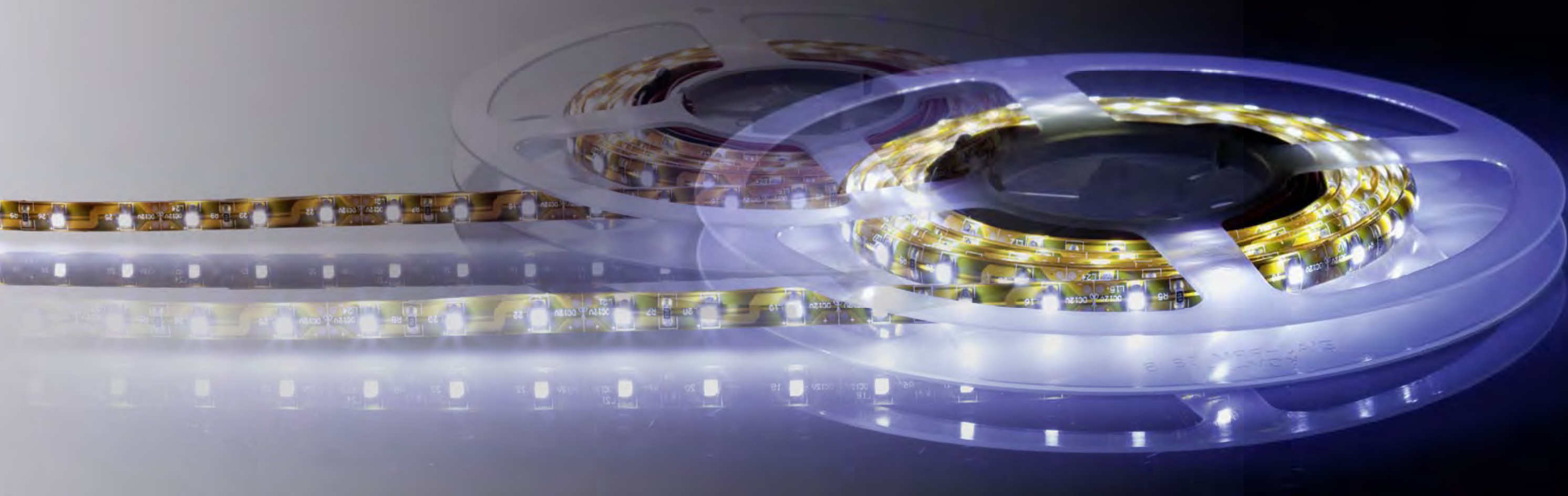


Ventilation plate big

ZLB 4
Ref. no. 80713445
Dim.: 175 x 285 x 11 mm
£ 19.22

ORIGINAL ACCESSORIES

ORIGINAL ACCESSORIES



ELECTRONICAL ACCESSORIES

SORTIMO ELECTRONIC ACCESSORIES

Sortimo offers a wide range of professional portable lamps, flood lamps and mounted lights in various versions to enable the best possible choice for you. In order to make your work day run even more smoothly, our electronic accessories can offer a wide variety of AC Inverters and plugs of all kinds.



PORTABLE LAMPS

In mobile use, the rechargeable portable lamps are resourceful and practical helpers in the dark as well as in potentially explosive environments.



Professional portable lamp LED 12V

ZPHS12VLED
Ref. no. 6000000656
Dim. (WxDxH): 120 x 104 x 245 mm
Weight: 1.1 kg
Professional portable lamp LED 12V with a battery charging station.
Attachment panel orange 230 V
Two phase euro plug power cable and 12/24V power cable
With a permanently installed power plug and operating instructions.

£ 201.06



Professional portable lamp 12 V explosion proof

ZPHS12VEX
Ref. no. 801013998
Dim. (WxDxH): 105 x 245 x 120 mm
Weight: 1.1 kg
Explosion proof safety portable lamp IP 64.
Dust proof and splash water protected, sturdy plastic casing.
Swivel lamp head, can also be implemented as an emergency lamp in accordance with VDE 0108.
Maintenance free lead-gel rechargeable battery. Complete set incl. safety lamp, charger, 220 V power cable, 12 V recharging cable and a clear and orange attachment panel.

£ 334.12

Spare parts for 12 volt professional portable lamps

Spare light bulb
ET GBPH12V
Ref. no. 801014000

£ 13.70

Spare rechargeable battery
ET AKKUPH12V
Ref. no. 801014001

£ 29.86



Rechargeable battery operated portable lamp

ZAHSW
Ref. no. 80715104
Rechargeable battery operated portable lamp incl. car recharger and mounting tray, 2 brightness settings, focus adjustment, emergency lighting function, lead-gel battery 6 V / 4 Ah, recharger for 230/12 V, splash proof with a carrying strap, incl. 230 V mains adapter.
Without warranty for battery.

£ 79.24

Spare rechargeable battery for portable lamp

ET AKKU
Ref. no. 801013529
Spare rechargeable battery

£ 14.00

Portable lamp

ZHSW 12
Ref. no. 801009973
12 V, 1.2 m cable length, 55 W, with a plug for a cigarette lighter socket, magnetic base, swivel bracket, 15° flood light.

£ 86.54



Extension cable for portable lamp

ZHSWV
Ref. no. 801009974
Extension cable 7 m spiral form

£ 47.01



Round two-way switch

EL WS ON/ON
Ref. no. 6000000710
Flat connection 4.8 mm
Maximum strain: 6A at 12V

£ 5.02

Round push button switch

Ref. no. 6000000711
Flat connection 4.8 mm
Maximum strain: 6A at 12V

£ 6.76



Flood lamp

Outdoor lighting for mounting on vehicles for better lighting.

Flood lamp 12 V

ZAS 12V
Ref. no. 801013764
Flood lamp 12 Volt / 55 Watt

£ 42.78

Flood lamp 24 V

ZAS 24V
Ref. no. 801013765
Flood lamp 24 Volt / 70 Watt

£ 41.59



On/off switch with an orange indicator light

ZEASO
Ref. no. 801014906
On/off switch with an orange indicator light for individual installation as required.

£ 9.66



Round label for a round two-way switch

EL AK S
Ref. no. 6000001305
The label makes it easier to find the switch and laminates the drill edge.
Outer diameter: 40 mm
Interior diameter: 20 mm

£ 1.02



MOUNTED LIGHTS

Optimum illumination can be achieved for your vehicle with the aid of mounted lights for any mobile work place. Therefore you can even do your work after dark. Sortimo has a wide range of connection options for the power supply of your electrical devices.

The AC inverter transforms the 12 volt vehicle supply voltage to a 230 volt alternating voltage, in order to guarantee the use of anything from a charger to a laptop. We also give a warranty of three years for electrical construction components.

ELECTRONICAL ACCESSORIES

LED

LED lamp 12 V
LA LED12V/1
Ref. No. 801013868
Dimensions (WxDxH):
150 x 25 x 150 mm

£ 51.84

LED-STRIP 1000
LED-S 1000
Ref. No. 801018095
Length: 1 m

£ 28.48

LED-STRIP 2000
LED-S 2000
Ref. No. 801018096
Length: 2 m

£ 52.83

Mounted light

LA LED 12V/DC 8W
Ref. no. 6000000547
Dim. (WxDxH): 168 x 88 x 9,1 mm
LED mounted light
24 x LED, 12 V, white, 3000/6000 K

£ 98.76

Voltage monitor 12V, 5A

SPWÄ 12V
Ref. no. 6000000286
Dim. (WxDxH): 150 x 120 x 35 mm

£ 36.17



Standard plug for internal use small

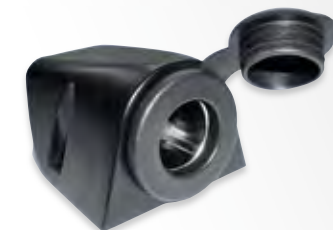
ZSD12AB
Ref. no. 801009981
Dim. (WxDxH): 58 x 37 x 25 mm
12 V standard plug
For internal use with
2 screw terminals.

£ 14.88

Standard plug for internal use big

ZSD12AB2
Ref. no. 801005397
Dim. (WxDxH): 75 x 50 x 35 mm
12 V standard plug
For internal use with
2 screw terminals.

£ 16.56



12 V LED switched light

Ref. No. 7100000038
Dimensions (WxDxH):
375.5 x 44 x 14.6 mm
12 V switchable LED light.
Uses just 0.5 W of energy to
produce 46 lumens.

£ 38.36



Mountable interior lamp

LAS16/12
Ref. No. 7100000012
Dimensions (WxDxH):
380 x 75 x 25 mm
Mountable interior lamp
12 V, 2 x 8 W

£ 24.24

LR8
Ref. No. 49750204
Replacement bulb 8 W

£ 7.92



ELECTRONICAL ACCESSORIES

AC INVERTER 12/230 V MODIFIED / QUASI SINE WAVE

Inverters are continuously rated and have overload, over voltage and low voltage cut outs.

All inverters are e marked to 95/54/EC



350 W 12 V / 240 V

Ref. No. 7100000114
HxWxD: 120 x 150 x 65 mm
£ 81.22

800 W 12 V / 240 V

Ref. No. 7100000115
HxWxD: 180 x 150 x 65 mm
£ 135.83

1000 W 12 V / 240V

Ref. No. 7100000116
HxWxD: 180 x 250 x 100 mm
£ 197.37

1800 W 12 V / 240 V

Ref. No. 7100000117
HxWxD: 270 x 250 x 100 mm
£ 297.89

ELECTRONIC ACCESSORIES POWERED BY SORTIMO



PASSENGER COMPARTMENT

PRODUCTS FOR YOUR PASSENGER COMPARTMENT

Being mobile, flexible and organised – this is not always easy. Sortimo has found an elegant solution to

this problem. With Sortimo's products for the passenger compartment, your mobile office is always on hand.



THE AUTOMANAGER KEEPS EVERYTHING ORGANISED WHILE YOU'RE ON THE ROAD

Safely stored on the passenger seat and secured against theft, your mobile office is always with you when you are on the road.

The extending, swivelling notebook table and large inner compartment make it totally practical.



Automanager without power supply

AM 0S
Ref. no. 601014453
Dim.: 580 x 300 x 410 mm
Automanager with swivelling notebook table and storage pockets for small items in the lid.
Weight: 7.4 kg

£ 319.09

Automanager with power supply

AM
Ref. no. 601009565
Automanager with swivelling notebook table and storage pockets for small items in the lid.
The electrical connection happens by means of a spiral cable with a 12 V universal plug.
Weight: 7.4 kg

£ 399.84

The perfect **transport trolley** makes it easy to move your Automanager around. Small items such as pens and calculators can be stored safely and tidily in the **office panel**. Mobile printers can also be securely attached to

the base of the Automanager using Velcro fasteners. The Automanager with power supply **can be plugged in** using a spiral cable with 12 V universal plug.



Automanager trolley

AMT
Ref. no. 601009549
Practical trolley for transporting the Automanager.
With telescopic handle.

£ 41.00



Anti-theft device

AMD
Ref. no. 601009567
The anti-theft device provides additional security for your Automanager by fastening it to the seat with a steel cable.
Weight: 0.2 kg

£ 15.13



Voltage transformer 12 V

AMSW
Ref. no. 601009449
12 V voltage transformer for connecting to the cigarette lighter. Various adaptors allow operation of a wide range of laptops and printers. (Please follow manufacturer's instructions.)

£ 43.75

AUTOASSISTANT AND OFFICE BAG PRACTICAL PASSENGERS

Sortimo's **Autoassistant** is not just a handy desk pad. Its movable clipboard for notes, two compartments for storing files and brochures and bottle holder slot mean that everything is on hand when you are on the road. It fastens securely to the passenger seat and also offers additional storage space under the desk pad.

Whether it is open on the passenger seat or closed to create a briefcase or laptop case – the Sortimo **Office bag** has plenty of room for your laptop, mobile phone and pens.

Autoassistant

AAS
Ref. no. 1000001823
Dim.: 362 x 480 x max. 661 mm
Autoassistant with two file compartments, desk pad with clipboard and slot for a 1.5 l bottle.
Includes a large box for all your documents.
With strap for fastening to the seat rest below the head rest.
Weight: 7.4 kg

£ 104.50

Divider for Autoassistant

TWSBB SF 05-11 AAS
Ref. no. 1000002082
Divider for better organisation of your Autoassistant.

£ 4.07

Office bag

OT
Ref. no. 601014026
Dim.: 420 x 395 x 130 mm
The Office bag is securely fastened to the head rest and seat rest with easily-detachable straps.
Your documents, pens, phone and laptop are all at your fingertips.
And when it's folded up, the office bag turns into a handy briefcase.

£ 85.06



PASSENGER COMPARTMENT

PASSENGER COMPARTMENT

WE'VE MADE UP OUR MIND
SIMPLY SORTIMO



PROFESSIONAL
SOLUTIONS FOR ALL
TRADES

Sortimo®
Intelligent Mobility

SORTIMO IN UK AND IRELAND

Sortimo UK & Ireland

Sortimo International Ltd
14 - 17 Ravenhurst Court
Risley
Warrington, Cheshire
WA3 6PN

FREEPHONE: 0800 027 5644

Phone +44 (0)1925 831636
Fax +44 (0)1925 848232
sales@sortimo.co.uk

www.sortimo.co.uk
www.sortimo-shop.co.uk
www.simpleco-shop.co.uk



AT YOUR SERVICE – WORLDWIDE!
SORTIMO INTERNATIONAL

Sortimo®

Intelligent Mobility

Argentina

Adolfo E. Seifer
Sortimo Liaison Office South America
Francia 2545
AR - 1642 San Isidro
Tel. +54 11 47238571
Fax +54 11 47239112
seiferar@arnet.com.ar
www.sortimo.com

Australia

MW Toolbox & Trailer Centre
P.O. Box 145
AU - 1680 Ryde, NSW
Tel. 1800 55 4434
or 13 000 TOOLBOX
info@sortimo.com.au
www.sortimo.com.au

Austria

Sortimo GesmbH
Technologiezentrum Linz
Wiener Straße 131, Eingang A
A - 4020 Linz
Tel. +43 810 081045
Fax +43 810 081046
office@sortimo.at
www.sortimo.at

Belgium

Sortimo BELUX bvba
Schaarbeecklei 491
B - 1800 Vilvoorde
Tel. +32 2 3550370
Fax +32 2 3550371
info@sortimo.be
www.sortimo.be

Cayman Islands

W.S.M. Wacker Service Mobil
P.O. Box 727
166 Beach Bay Rd.
KY1 - 1103 Grand Cayman Islands
Tel. +1 345 9168565
sunnycayman@hotmail.com

Czech Republic

FD servis Praha s.r.o.
Kuri 26
CZ - 251 01 Říčany u Prahy
Tel. +420 323 606109
Fax +420 323 606107
info@fdservispraha.cz
www.fdservispraha.cz

TOP CENTRUM

Jaroslav Novák
Rohovládova Bělá 91
CZ - 533 43 Rohovládova Bělá
Tel. +420 466 921292
Fax +420 466 921293
topcentrum@topcentrum.cz
www.topcentrum.cz

Denmark

Sortimo A/S
Greve Main 24
DK - 2670 Greve
Tel. +45 43 5522 22
Fax +45 43 5522 26
info@sortimo.dk
www.sortimo.dk

Finland

Suomen Autokaluste Oy
Ormuspellontie 9
FIN - 00700 Helsinki
Tel. +358 207 558816
info@sortimo.fi
www.sortimo.fi

France

Sortimo S.A.R.L.
Aéroport
1 Rue Jean Mermoz Bât C6
F - 95500 Gonesse
Tel. +33 1 39874466
Fax +33 1 39875168
info@sortimo.fr
www.sortimo.fr

GCC Countries

H&H Euro Tech Co. W.L.L.
Building 417, Road 41
Budaörsi út 11
H - 2092 Budakeszi
Juffair, Manama
Kingdom of Bahrain
Tel. +973-13688 968
Fax +973-13688 978
info@sortimo-gcc.com
www.hh-eurotec.com
www.sortimo-gcc.com

Greece

Stathis Transport Refrigeration
Dounas Theocharis & Co SA
Sindos Industrial Area, Entrance B
P.O. Box 11 34
GR - 570 22 Thessaloniki
Tel. +30 23 10798300
Fax +30 23 10798370
contact@stathis.com.gr
www.stathis.com.gr

UK and Ireland

Sortimo International Ltd.
14 - 17 Ravenhurst Court
Birchwood, Warrington, Cheshire
GB - WA3 6PN
FREEPHONE: 0800 027 5644
Tel. +44 1925 831636
Fax +44 1925 848232
info@sortimo.co.uk
www.sortimo.co.uk

Iceland

RAFVER EHF
Skelfan 3 E-F
P.O. Box 84 33
ISL - 128 Reykjavik
Tel. +35 4 5812333
Fax +35 4 5680215
rafver@rafver.is
www.rafver.is

Hungary

Hofmann Garázsipari Kft.
Budaörsi út 11
H - 2092 Budakeszi
Tel. +36 23 535831
Fax +36 23 535849
ballun@t-online.hu
www.ballun.hu

Pappas Auto Magyarország Kft.

Kárpát út 21
H - 1133 Budapest
Tel. +36 1 4637400
Fax +36 1 4637409
info@pappas.hu
www.pappas.hu

Israel

Sortline Ltd.
17 Zvi Bergman St.
Industrial Zone Sgula
IL - 49277 Petach-Tikva
Tel. +972 3 9052117
Fax +972 3 9052110
info@sortline.co.il
www.sortline.co.il

Italy

Sortimo Italia S.r.l.
Via Crivellini, 7
I - 37010 Affi (VR)
Numero Verde 800 855 717
Tel. +39 045 4858 180
Fax +39 045 7238 248
info@sortimo.it
www.sortimo.it

Japan

MURATEC - KDS CORPORATION
No. 39, Matsuda-cho
Higashi-Kujo, Minami-Ku
JP - 601 8036 Kyoto
Tel. +81 75 681 2761
Fax +81 75 661 2764
workman@kdsjpn.co.jp
www.kdsjpn.co.jp

Lithuania

Skaida-nf UAB
A. Gostauto 8 - 0224
LT - 01108 Vilnius
Tel. +370 5 2613 443
Fax +370 5 2613 443
skaida.nf@mail.lt

Luxembourg

Sortimo BELUX bvba
Schaarbeecklei 491
B - 1800 Vilvoorde
Tel. +32 2 3550370
Fax +32 2 3550371
info@sortimo.be
www.sortimo.be

Netherlands

Sortimo Nederland B.V.
Nijverheidstraat 11
NL - 2861 GX Bergambacht
Tel. +31 182 356060
Fax +31 182 356090
info@sortimo.nl
www.sortimo.nl

Norway

Sortimo A/S
Ulvenveien 92 A
N - 0581 Oslo
Tel. +47 22 729270
Fax +47 22 729272
firmapost@sortimo.no
www.sortimo.no

Poland

MobilCar s.c.
Dobrzeń 26
PL - 56-410 Dobroszyce
Tel. +48 71 3153532
Fax +48 71 3153519
sortimo@mobilcar.pl
www.mobilcar.pl

Russia

Forward Service
Ochakovskoe sh. 34
Business centre „West Park“,
office 507
RU - 119530 Moscow
Tel. +7 495 2294476
Fax +7 495 2294476
info@sortimo.ru
www.sortimo.ru

Serbia

Sorti oprema d.o.o.
Krajiška 21
RS - 11080 Zemun
Tel. +381 11 3076750
Fax +381 11 3076752
office@sortimo.rs
www.sortimo.rs

Slovakia

Technia spol s.r.o.
Komárňanská cesta 72
SK - 940 01 Nové Zámky
Tel. +421 35 6921111
Fax +421 35 6426443
technia@technia.sk
www.technia.sk

Slovenija

Sortimosi d.o.o.
Gerbičeva 57
1000 Ljubljana
Tel. +386 (0)1 280 88 08
Fax +386 (0)1 280 88 10
Gsm +386 (0)41 644 296
sortimo@sortimo.si
www.sortimo.si

Spain / Portugal

Sortimo Ibérica
Comercio y Servicios S.L.
Ctra. M-106 km 2
P.I. Garza 2 nave 29
ES - 28110 Algete (Madrid)
Tel. +34 902448899
Fax +34 916289100
info@sortimo.es
www.sortimo.es

South Korea

Rocky Co. Ltd.
4 BL-4 LT Namdong
Industrial Complex
618-3 Namchon Dong
Nandong-Gu
KR - 405-846 Incheon
Tel. +82 32 811 5500
Fax +82 32 813 6670
www.rocky.co.kr
galantvr4@naver.com

Sweden

Sortimo AB
Box 9173
SE - 400 94 Göteborg
Tel. +46 31 761 45 20
Fax +46 31 77699 50
info@sortimo.se
www.sortimo.se

Switzerland

Walter Rüegg AG
Sortimo Zentrum
Grabenackerstr. 1
CH - 8156 Oberhasli
Tel. +41 44 8525060
Fax +41 44 8525070
info@sortimo.ch
www.sortimo.ch

Turkey

Dorser Otomotiv San. Ltd. Şti.
T. Özal Cd.119 Şekerpınar
Çayırova Kocaeli
Tel. +90 262 658 1022
Fax +90 262 658 1033
info@dorser.com
www.dorser.com

USA / North America

(Canada, USA, Mexico)
Sortimo of North America, Inc.
3055 Northwoods Cir
US - Norcross, GA 30071
Tel. 877 812 6994 (toll free)
Tel. +1 404 8126994
Fax +1 404 8129940
info@sortimo.us
www.sortimo.us

Venezuela

Servibus de Venezuela C.A.
Avenida Los Parceleros
Calle N° 17-92
Zona Industrial, Aguas Calientes
YV - Ureña - Estado Táchira
Tel. +58 276 7874865
Fax +58 276 7870279
servibus.ca@gmail.com
www.servibus.com.ve

MORE INFORMATION

Please complete and fax to Sortimo: 01925 848232

Please send me further information and brochures free of charge:

Vehicle brochures with Sortimo van racking solutions for:

- | | | | |
|--|---------------------------------|--|----------------------------------|
| <input type="checkbox"/> Citroën | <input type="checkbox"/> Fiat | <input type="checkbox"/> Ford | <input type="checkbox"/> Iveco |
| <input type="checkbox"/> Mercedes-Benz | <input type="checkbox"/> Nissan | <input type="checkbox"/> Opel/Vauxhall | <input type="checkbox"/> Peugeot |
| <input type="checkbox"/> Renault | <input type="checkbox"/> Toyota | <input type="checkbox"/> Volkswagen | |

Please send me a copy of the **Sortimo Mobile Assortments brochure**.

I would like a **consultation** to find out more about Sortimo van racking solutions.

Please call me back to arrange an appointment with no obligation on _____ at (time) _____ at (place).

I would like to subscribe to the **Sortimo Newsletter** free of charge.

My e-mail address is: _____

Company name _____

Surname, first name _____

Street _____ Postcode _____ City _____

Tel. _____ Fax _____

E-Mail _____

Line of business _____

Thank you for your interest and we look forward to hearing from you!

Sortimo International Ltd · 14-17 Ravenhurst Court · Birchwood
Warrington · Cheshire WA3 6PN · Tel. +44 (0)1925 831636 · Fax. +44 (0)1925 848232
E-mail. info@sortimo.co.uk · www.sortimo.co.uk

VISIT US ONLINE!

As market leader we offer a wide variety of services, information and interactive quotations for all kinds of needs surrounding van racking systems – naturally online too.

Lots of our products can be ordered conveniently from our Web Shop.



www.sortimo.co.uk

For all products shown in our catalogue, you can find on our website:

- additional information
- design and equipment suggestions

Please visit our extensive download area!



www.sortimo-shop.co.uk

- over 350 articles
- reliable 48 hour delivery service
- shipment free of charge as of 20 euro order value

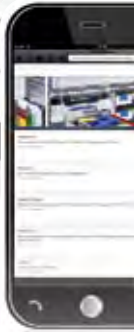
Avail of the special offers Online!



www.simpleco-shop.co.uk

- with a configurator for selecting the ideal van racking solution
- easy ordering
- quick delivery

The quickest way to your own van racking solution!



<http://www.sortimo.co.uk>

OA UK 11.2013 - We reserve the right to make technical changes and alterations to the catalogue specifications without notice.



RICHARDSONS
MAKING WORKSPACE WORK

6 Collingwood Court
Riverside Park
Middlesbrough TS2 1RP



Tel: 01642 242228
Fax: 01642 242259

www.richardsonsuk.co.uk | sales@richardsonsuk.co.uk