



## RIVET BASED BENCHES & WORKSTATIONS

**A cost effective answer to solve your busy packing and assembly areas.**

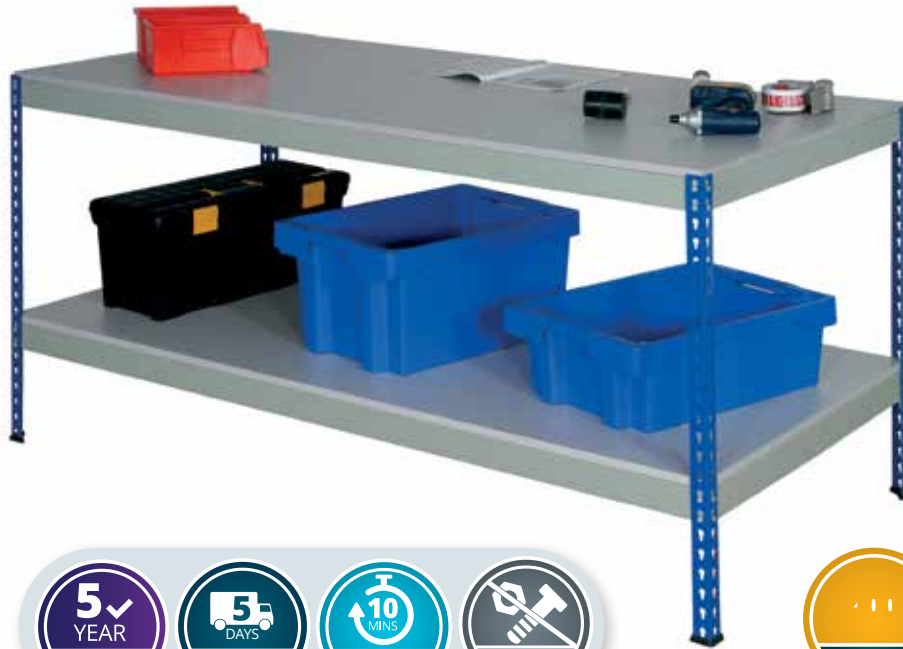
Strong and simple to build these workbenches come in a wide range of sizes that will suit most applications.

We now offer 2 styles of worktops - Chipboard and White MFC with the MFC tops being edged with a hard wearing 1mm PVC edging.

- **Easy to build and adjust**
- **Based on our Rivet Racking platform**
- **Guaranteed delivery in 5 days**
- **Available in blue/grey and blue/orange**
- **Other sizes available**



# Great value heavy duty Workbenches built on our Rivet Racking system



Heights	Widths	Depths	Application	Construction	Loadings
Worktop height (mm) <b>915</b>  Top shelf height (mm) <b>1830</b>	Workbench widths (mm) <b>915, 1220, 1525, 1830, 2135, 2440</b>  Workstation widths (mm) <b>915, 1220, 1830, 2440</b>  Packing Bench widths (mm) wide: <b>1525, 1830</b> long: <b>915, 1220</b>	Workbench depths (mm) <b>762, 915</b>  Workstation depths (mm) <b>915</b>  Packing Bench depths (mm) wide: <b>915</b> long: <b>1830, 2135</b>	Environment <b>Workshop, Warehouse, Storeroom</b>  Usage <b>Order Processing, Packing, Manufacturing</b>	Split Uprights: <b>Steel</b> Blue RAL5010  Beams: <b>Steel</b> Grey RAL7038 Orange RAL2002  Worktops/Shelves <b>Chipboard or White MFC</b>	Level UDL up to <b>400kg</b>  Max Bench Load <b>600kg</b>



from  
**£248.<sup>72</sup>**

Full Underself Workstation with Chipboard Tops 1830 x 1830 x 915

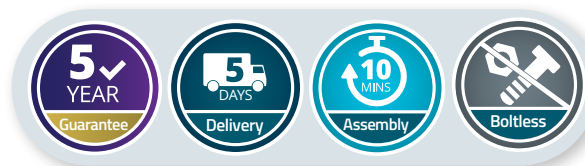


## RIVET WORKSTATIONS

Simple to build and incredibly strong.

These picking and assembly workbenches come with a strong worktop, 915mm high and two storage shelves above (305mm deep).

From Prices based on order of 3 Items +



Chipboard Top

### Full Underself Workstation - Chipboard

Order more and save money (Price for Each)

H x W x D (mm)	Code	Price for 1	Price for 2	Price for 3+
1830 x 915 x 915	RRWS/18/09/09/03	<b>£314.87</b>	<b>£281.80</b>	<b>£248.72</b>
1830 x 1220 x 915	RRWS/18/12/09/03	<b>£351.81</b>	<b>£318.73</b>	<b>£285.66</b>
⊙ 1830 x 1830 x 915	RRWS/18/18/09/03	<b>£463.27</b>	<b>£430.20</b>	<b>£397.12</b>
1830 x 2440 x 915	RRWS/18/24/09/03	<b>£542.98</b>	<b>£509.91</b>	<b>£476.83</b>

① Price includes uprights, plastic feet, all necessary beams and shelves. Total workbench capacity = 600kgs\*\*  
(\*\* each shelf to carry no more than 400kgs. Floor fixing not included.)

### Blue & Orange Combination Available



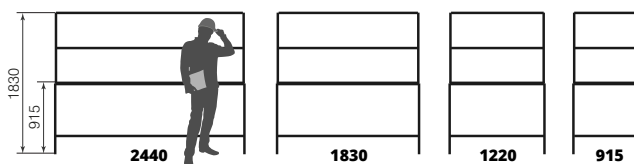


# Great value Workstations based on our Rivet Racking system



From Prices based on order of 3 Items +

Available Widths (mm)



Half Undershelf Workstation - Chipboard				
Order more and save money (Price for Each)				
H x W x D (mm)	Code	Price for 1	Price for 2	Price for 3+
1830 x 915 x 915	RRWSH/18/09/09/03	£297.79	£264.71	£231.64
1830 x 1220 x 915	RRWSH/18/12/09/03	£331.08	£298.01	£264.93
1830 x 1830 x 915	RRWSH/18/18/09/03	£431.13	£398.06	£364.98
1830 x 2440 x 915	RRWSH/18/24/09/03	£508.42	£475.34	£442.27

Price includes uprights, metal feet, all necessary beams and shelves. Total workbench capacity = 600kgs\*\*  
(\*\* each shelf to carry no more than 400kgs. Floor fixing required = metal feet are supplied so uprights can be fixed to the floor. Floor fixings not included.)

T Bar Workstation - Chipboard				
Order more and save money (Price for Each)				
H x W x D (mm)	Code	Price for 1	Price for 2	Price for 3+
1830 x 915 x 915	RRWST/18/09/09/03	£277.28	£244.20	£211.13
1830 x 1220 x 915	RRWST/18/12/09/03	£304.51	£271.44	£238.36
1830 x 1830 x 915	RRWST/18/18/09/03	£389.24	£356.16	£323.09
1830 x 2440 x 915	RRWST/18/24/09/03	£453.13	£420.05	£386.98

Price includes uprights, metal feet, all necessary beams and shelves. Total workbench capacity = 600kgs\*\*  
(\*\* each shelf to carry no more than 400kgs. Floor fixing required = metal feet are supplied so uprights can be fixed to the floor. Floor fixings not included.)

❗ Important: The total bench load should not exceed 600kg.

[www.richardsonsuk.co.uk](http://www.richardsonsuk.co.uk) | [sales@richardsonsuk.co.uk](mailto:sales@richardsonsuk.co.uk) | Tel: 01642 242228





# A cost effective solution to your busy packing and assembly areas



Full undershelf Workbench with White MFC Tops 915 x 1830 x 915

## RIVET WORKBENCHES

Strong and simple to build these workbenches come in a wide range of sizes that will suit most applications. We now offer 2 styles of 18mm thick tops – chipboard or white MFC with the MFC tops being edged with a hard wearing 1mm PVC edging.

From Prices based on order of 3 Items +



White MFC Top†



Chipboard Top



Blue/Orange Combination Available

Full Undershelf Workbench		Chipboard Top			MFC Top <sup>†</sup>			
Order more and save money (Price for Each)								
H x W x D (mm)	Code	Price for 1	Price for 2	Price 3+	Code	Price for 1	Price for 2	Price for 3+
915 x 915 x 762	RRWB/09/09/07	£211.13	£178.05	£144.98	RRWB/09/09/07/M	£217.52	£184.45	£151.37
915 x 915 x 915	RRWB/09/09/09	£228.71	£195.64	£162.56	RRWB/09/09/09/M	£236.10	£203.03	£169.95
915 x 1220 x 762	RRWB/09/12/07	£237.04	£203.96	£170.89	RRWB/09/12/07/M	£245.09	£212.01	£178.94
915 x 1220 x 915	RRWB/09/12/09	£257.76	£224.69	£191.61	RRWB/09/12/09/M	£267.25	£234.17	£201.10
915 x 1525 x 762	RRWB/09/15/07	£258.65	£225.57	£192.50				
915 x 1525 x 915	RRWB/09/15/09	£281.69	£248.61	£215.54				
915 x 1830 x 762	RRWB/09/18/07	£290.84	£257.76	£224.69		RRWB/09/18/07/M	£302.53	£269.45
⊙ 915 x 1830 x 915	RRWB/09/18/09	£316.20	£283.12	£250.05	RRWB/09/18/09/M	£329.87	£296.79	£263.72
915 x 2440 x 762	RRWB/09/24/07	£347.40	£314.32	£281.25	RRWB/09/24/07/M	£362.72	£329.65	£296.57
915 x 2440 x 915	RRWB/09/24/09	£379.26	£346.19	£313.11	RRWB/09/24/09/M	£397.12	£364.05	£330.97

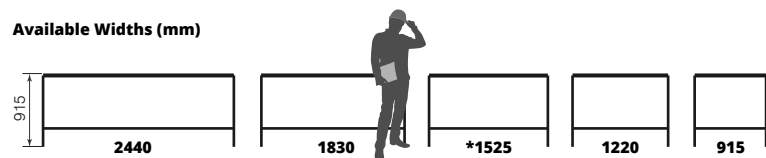
† Price includes uprights, plastic feet, all necessary beams and shelves. Total workbench capacity = 600kgs\*\*  
(\*\* each shelf to carry no more than 400kgs. No floor fixing required = Plastic Feet Included.) †Allow 10 working days for MFC tops.

† Please allow 10 working days for MFC worktops.

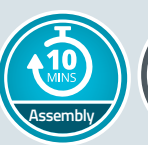
[www.richardsonsuk.co.uk](http://www.richardsonsuk.co.uk) | [sales@richardsonsuk.co.uk](mailto:sales@richardsonsuk.co.uk) | Tel: 01642 242228

# Workbenches based on our Rivet Racking system

Available Widths (mm)



\*Widths available only on workbenches with full undershelf



Workbench - Half Undershelf			Chipboard Top			MFC Top <sup>†</sup> (Chipboard Shelf)		
Order more and save money (Price for Each)								
H x W x D (mm)	Code	Price for 1	Price for 2	Price 3+	Code	Price for 1	Price for 2+	Price for 3+
915 x 915 x 915	RRWBH/09/09/09	£217.85	£184.78	£151.70	RRWBH/09/09/09/M	£221.55	£188.47	£155.40
915 x 1220 x 915	RRWBH/09/12/09	£237.31	£204.24	£171.16	RRWBH/09/12/09/M	£242.05	£208.98	£175.90
915 x 1830 x 915	RRWBH/09/18/09	£289.02	£255.95	£222.87	RRWBH/09/18/09/M	£295.86	£262.78	£229.71
915 x 2440 x 915	RRWBH/09/24/09	£333.01	£299.94	£266.86	RRWBH/09/24/09/M	£341.94	£308.87	£275.79

Price includes uprights, metal feet, all necessary beams and shelves. Total workbench capacity = 600kgs\*\*  
 (\*\* Each shelf to carry no more than 400kgs. Floor fixing required = metal feet are supplied so uprights can be fixed to the floor. Floor fixings not included.) †Allow 10 working days for MFC tops.

Workbench - T-Bar		Chipboard Top				MFC Top†		
Order more and save money (Price for Each)								
H x W x D (mm)	Code	Price for 1	Price for 2	Price 3+	Code	Price for 1	Price for 2+	Price for 3+
915 x 915 x 762	RRWBT/09/09/07	£185.66	£152.59	£119.51	RRWBT/09/09/07/M	£188.86	£155.78	£122.71
915 x 915 x 915	RRWBT/09/09/09	£199.77	£166.70	£133.62	RRWBT/09/09/09/M	£203.47	£170.39	£137.32
915 x 1220 x 762	RRWBT/09/12/07	£198.01	£164.93	£131.86	RRWBT/09/12/07/M	£202.03	£168.96	£135.88
915 x 1220 x 915	RRWBT/09/12/09	£213.22	£180.15	£147.07	RRWBT/09/12/09/M	£217.96	£184.89	£151.81
915 x 1830 x 762	RRWBT/09/18/07	£232.35	£199.28	£166.20	RRWBT/09/18/07/M	£238.20	£205.12	£172.05
915 x 1830 x 915	RRWBT/09/18/09	£249.88	£216.81	£183.73	RRWBT/09/18/09/M	£256.72	£223.64	£190.57
915 x 2440 x 762	RRWBT/09/24/07	£260.80	£227.72	£194.65	RRWBT/09/24/07/M	£268.46	£235.38	£202.31
915 x 2440 x 915	RRWBT/09/24/09	£280.64	£247.57	£214.49	RRWBT/09/24/09/M	£289.57	£256.50	£223.42

Price includes uprights, metal feet, all necessary beams and shelves. Total workbench capacity = 600kgs\*\*  
 (\*\* Each shelf to carry no more than 400kgs. Floor fixing required = metal feet are supplied so uprights can be fixed to the floor.) †Allow 10 working days for MFC tops.

From Prices based on order of 3 items +

from  
£151.<sup>70</sup>



Half Undershelf Workbench with Chipboard Tops 915 x 1830 x 915

from  
£119.<sup>51</sup>



T Bar Workbench with Chipboard Top 915 x 1830 x 915

ⓘ The total load for all the levels within each workbench should not be more than 600kg.

www.richardsonsuk.co.uk | sales@richardsonsuk.co.uk | Tel: 01642 242228

## RIVET HEAVY DUTY MOBILE WORKBENCH

Heavy Duty workbench blends the simplicity of our standard rivet style workbenches bolted to a frame, offering a sturdy and robust solution to any workplace. The bench can be fitted with a choice of 2 worktops and the base comes with heavy duty nylon swivel castors (two braked and two un-braked).

### Bench Colour Options



For Blue Uprights with Orange Shelves add /BO to the end of your chosen price code.



For Blue Uprights with Grey Shelves add /BG to the end of your chosen price code.



from  
**£225.<sup>23</sup>**

Mobile Rivet Bench 880 x 1830 x 762 + Detail on the castor fixed to the upright



From Prices based on order of 3 Items +



Workbench - Full Undershelf			Chipboard Top			MFC Top¹		
Order more and save money (Price for Each)								
H x W x D (mm)	Code	Price for 1	Price for 2	Price 3+	Code	Price for 1	Price for 2	Price for 3+
880 x 915 x 610	RRMB/09/09/06	£292.01	£258.62	£225.23	RRMB/09/09/06/M	£296.53	£263.45	£230.38
880 x 915 x 762	RRMB/09/09/07	£307.26	£273.87	£240.48	RRMB/09/09/07/M	£310.75	£277.68	£244.60
880 x 915 x 915	RRMB/09/09/09	£323.39	£290.00	£256.61	RRMB/09/09/09/M	£327.73	£294.66	£261.58
880 x 1220 x 610	RRMB/09/12/06	£309.70	£276.31	£242.92	RRMB/09/12/06/M	£316.15	£283.08	£250.00
880 x 1220 x 762	RRMB/09/12/07	£327.96	£294.57	£261.18	RRMB/09/12/07/M	£332.91	£299.84	£266.76
880 x 1220 x 915	RRMB/09/12/09	£346.32	£312.93	£279.54	RRMB/09/12/09/M	£352.54	£319.46	£286.39
880 x 1525 x 610	RRMB/09/15/06	£331.35	£297.96	£264.57				
880 x 1525 x 762	RRMB/09/15/07	£349.16	£315.77	£282.38				
880 x 1525 x 915	RRMB/09/15/09	£369.86	£336.47	£303.08				
880 x 1830 x 610	RRMB/09/18/06	£355.78	£322.39	£289.00	RRMB/09/18/06/M	£362.02	£328.94	£295.87
880 x 1830 x 762	RRMB/09/18/07	£375.82	£342.43	£309.04	RRMB/09/18/07/M	£383.96	£350.88	£317.81
880 x 1830 x 915	RRMB/09/18/09	£398.86	£365.47	£332.08	RRMB/09/18/09/M	£408.76	£375.69	£342.61

Includes 2 x braked & 2 x un-braked swivel castors and fixings, uprights, beams and tops. †Allow 10 working days for MFC tops.



Both mobile benches are available in Blue/Orange or Blue/Grey combinations and 2 types of worktops (Chipboard or White MFC).  
[www.richardsonsuk.co.uk](http://www.richardsonsuk.co.uk) | [sales@richardsonsuk.co.uk](mailto:sales@richardsonsuk.co.uk) | Tel: 01642 242228



## RIVET TROLLEY SHELVING

Our range of mobile trolley shelving enables you to move goods safely and easily between work areas, making stock moveable, easy to replenish and secure. The base can support multiple bay sizes and configurations. Levels can be configured as a tray or as a standard shelf.

- Provide flexible storage solution
- Move goods between work areas
- Maximum bay load of 300kgs
- Other sizes and specials available



### Trolley Colour Options



For Blue Uprights with Orange Shelves add /BO to the end of your chosen price code.



For Blue Uprights with Grey Shelves add /BG to the end of your chosen price code.

### Trolley Shelving

Order more and save money (Price for Each)

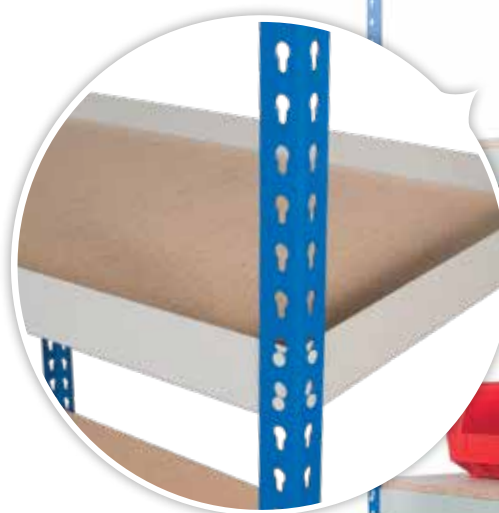
H x W x D (mm)	Code	Price for 1	Price for 2	Price for 3+
1950 x 915 x 610	TRB/18/09/06/4	£386.60	£359.04	£331.48
1950 x 915 x 762	TRB/18/09/07/4	£413.78	£386.22	£358.65
1950 x 1220 x 610	TRB/18/12/06/4	£426.40	£398.84	£371.28
1950 x 1220 x 762	TRB/18/12/07/4	£458.65	£431.09	£403.53

Includes 2x braked & 2x un-braked swivel castors and fixings, uprights, beams and 4x tops

From Prices based on order of 3 Items +

Pricing based on 4 levels

from  
**£331.<sup>48</sup>**



Trolley Shelving 1950 x 915 x 610



TROLLEY SHELVING

# Long Packing Workstation



Chipboard Top

from  
**£315.<sup>67</sup>**

**450**  
KG  
Bench Load

● Long Packing Station 1830 x 915 x 1830

● From Prices based on order of 3 Items +

## RIVET PACKING WORKSTATIONS

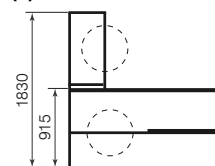
Great packing benches in two different styles, complete with lower bubble wrap dispenser and upper paper roll dispenser.

The benches also come with an upper storage level for additional storage and, depending on the bench configuration, you get a lower storage level as well.

- **Cost effective packing stations**
- **Two packaging roll dispensers**
- **Additional storage shelves**

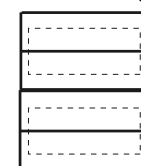


Available Sizes (mm)  
Lengths (D)



● 1830

Widths (W)



1220



● 915

Long Packing Workstation

Chipboard Tops

Order more and save money (Price for Each)

H x W x D (mm)	Code	Price for 1	Price for 2	Price for 3+
1830 x 915 x 1830	RRLPS/18/09/18/03	<b>£403.87</b>	<b>£359.77</b>	<b>£315.67</b>
1830 x 1220 x 1830	RRLPS/18/12/18/03	<b>£448.20</b>	<b>£404.10</b>	<b>£360.00</b>

● Price includes uprights, plastic feet, all necessary beams, tops and 2 x roll dispensers.

● All dispensers are simply and quickly lifted out to change the rolls.

[www.richardsonsuk.co.uk](http://www.richardsonsuk.co.uk) | [sales@richardsonsuk.co.uk](mailto:sales@richardsonsuk.co.uk) | Tel: 01642 242228

# Fantastic value Wide Packing Workstation based on our Rivet Racking system

## Workstation Colour Options



For Blue Uprights with Orange Shelves add /BO to the end of your chosen price code.



For Blue Uprights with Grey Shelves add /BG to the end of your chosen price code.

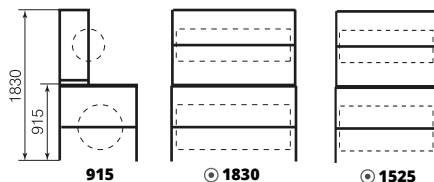


Chipboard Top

## Available Sizes (mm)

Depth (D)

Widths (W)



Wide Packing Workstation		Chipboard Tops		
Order more and save money (Price for Each)				
H x W x D (mm)	Code	Price for 1	Price for 2	Price for 3+
1830 x 1525 x 915	RRWPS/18/15/09/03	£395.44	£362.36	£329.29
1830 x 1830 x 915	RRWPS/18/18/09/03	£455.44	£422.37	£389.29

Price includes uprights, plastic feet, all necessary beams, tops and 2 x roll dispensers.



From Prices based on order of 3 Items +



Wide Packing Station 1830 x 1830 x 915 & Detail of roll dispenser on upright



PACKING WORKSTATIONS

Workstations are available in Blue/Orange or Blue/Grey combinations.

[www.richardsonsuk.co.uk](http://www.richardsonsuk.co.uk) | [sales@richardsonsuk.co.uk](mailto:sales@richardsonsuk.co.uk) | Tel: 01642 242228